

# WATERSIDE HOUSE

*Magazine* 



THE  
COUNTRY  
HOUSE  
DEPT.





# WATERSIDE *House*

Fishery Road, Bray, Berkshire, SL6 1UN



Occupying one of the most sought-after positions on the exclusive Fisheries Estate, this is a quiet private road where beautifully landscaped gardens sweep down to the River Thames. Built in the early 1900s, the house's striking black and white elevations set it apart from its distinguished neighbours, while a charming boathouse and private mooring underscore its deep connection to the water. Inside, the house is both elegant and expansive, blending original Edwardian details – wood panelling, coving and fine floors – with thoughtfully designed modern interiors. Moments from the heart of Bray, with its world-renowned dining, this is a home made for both entertaining and unwinding, where timeless character and contemporary comfort meet in a truly remarkable riverside setting.







# THE FINER *Details*

**Bedrooms**

6

**Reception Rooms**

6

**Bath/Shower Rooms**

7

**Three Car Garage**

**Boathouse**

**Thames Frontage**

**Acreage**

0.33

**What3Words**

///race.remainer.treat

**Co-Ordinates**

51° 48' 43" N, 002° 05' 25" W

**Services**

Mains water, drainage, electricity  
Gas fired central heating

**EPC**

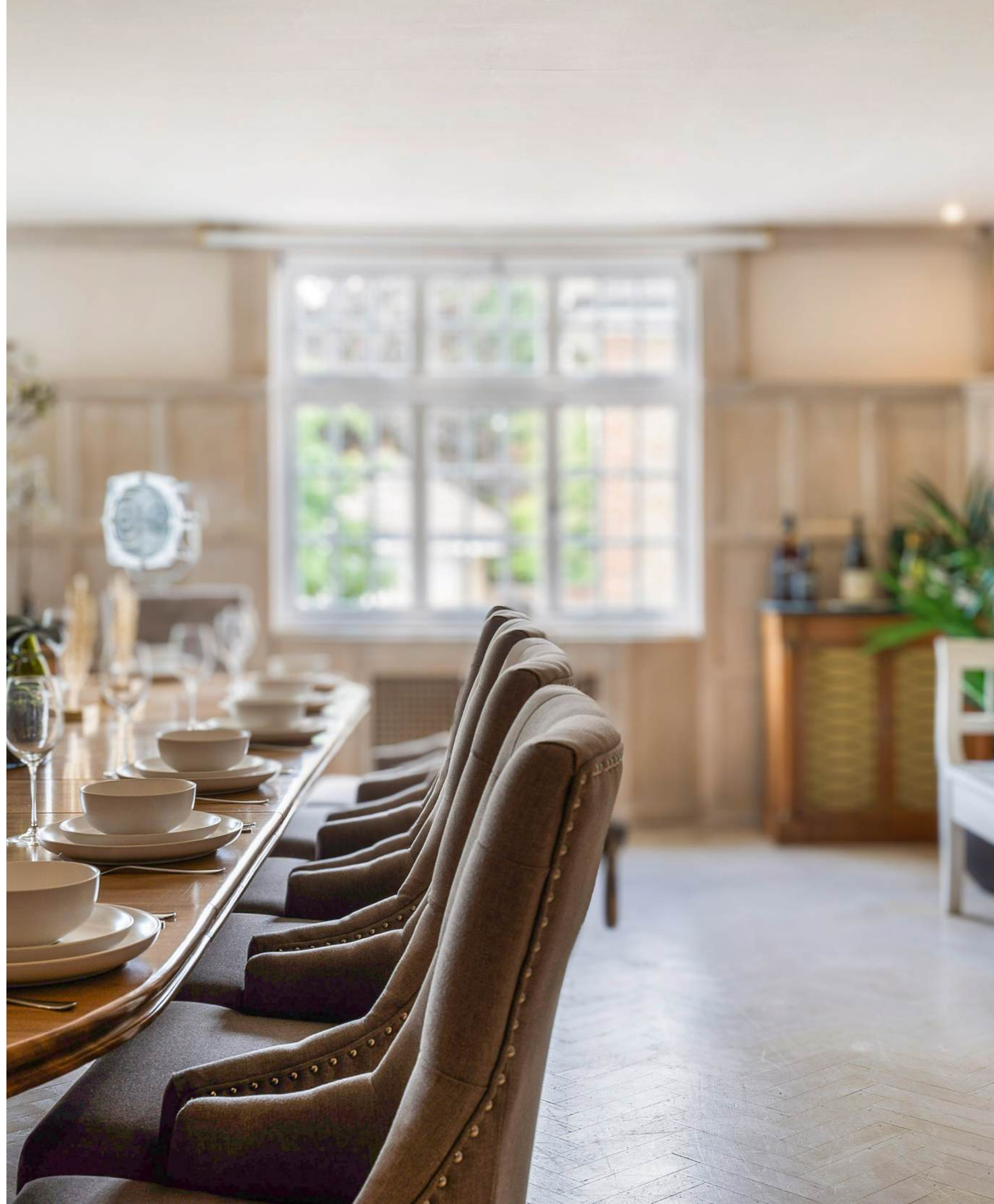
Band D

**Council Tax**

Band H

**Local Authority**

Royal Borough of Windsor and Maidenhead













## ABOUT THIS *Area*



Bray is a picturesque culinary village close to Windsor and Maidenhead with access into London in under 20 minutes. The village boasts a wealth of Michelin starred restaurants including the Fat Duck, The Hinds Head and The Waterside Inn. Other notable restaurants include Caldesi in Campagna and The Crown, amongst many others. Bray is located on the River Thames and Windsor is east to access by foot, car, bicycle or even boat. Boats can be taken from Oakley Court Hotel or Cliveden which are both within easy reach. Maidenhead is a short drive and offers a fast train into London (19 minutes) and more recently the Elizabeth line (Cross Rail), as well as many new shops, restaurants and leisure facilities since the regeneration of the town. Access into London is easy via the M4 as well as Heathrow Airport. Excellent schooling surrounds Bray with primary options such as Oldfield School, Braywick Primary, Lambrook and St George's Windsor. Senior schooling is in abundance with Holyport College close by and Eton, Heathfield, St George's & St Mary's Ascot within a 10 mile radius.





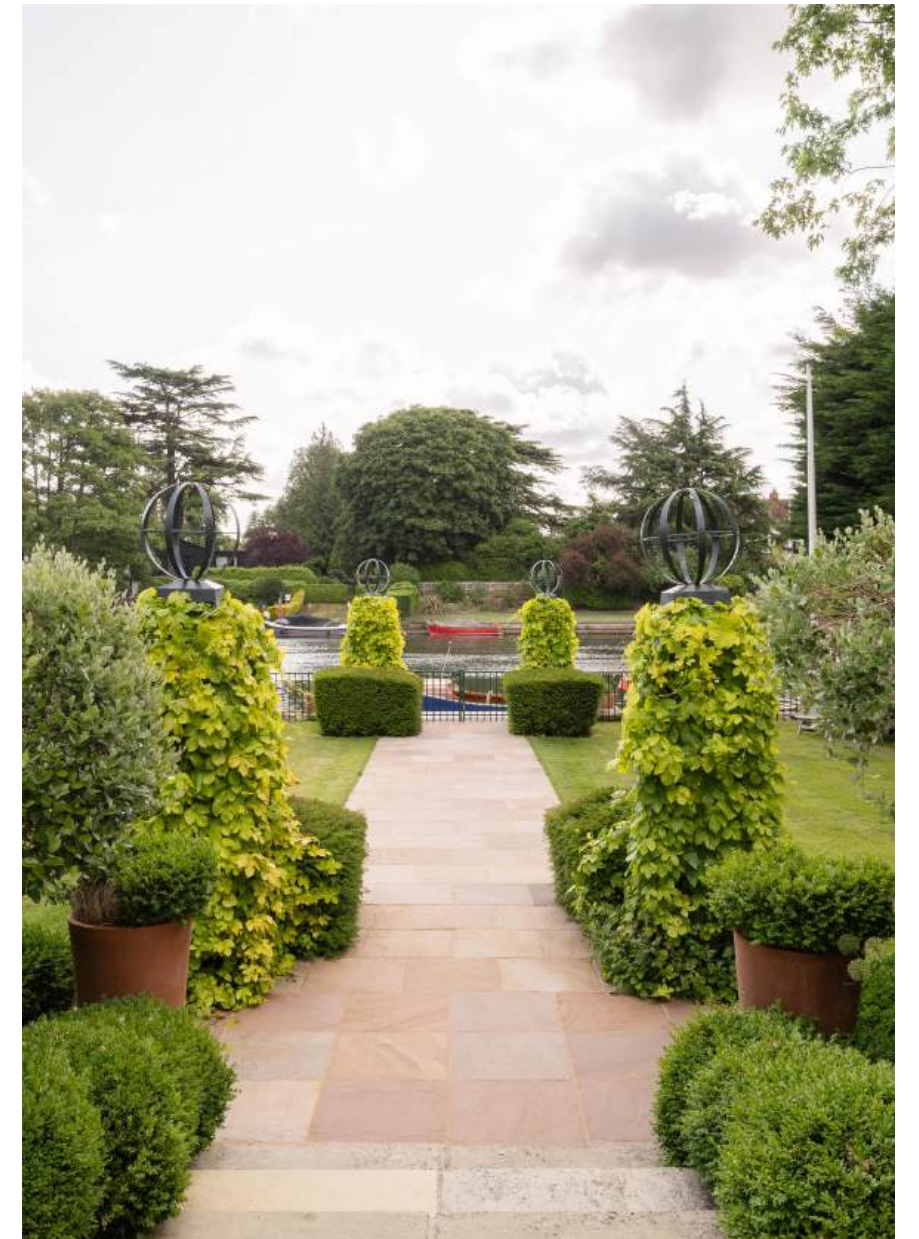
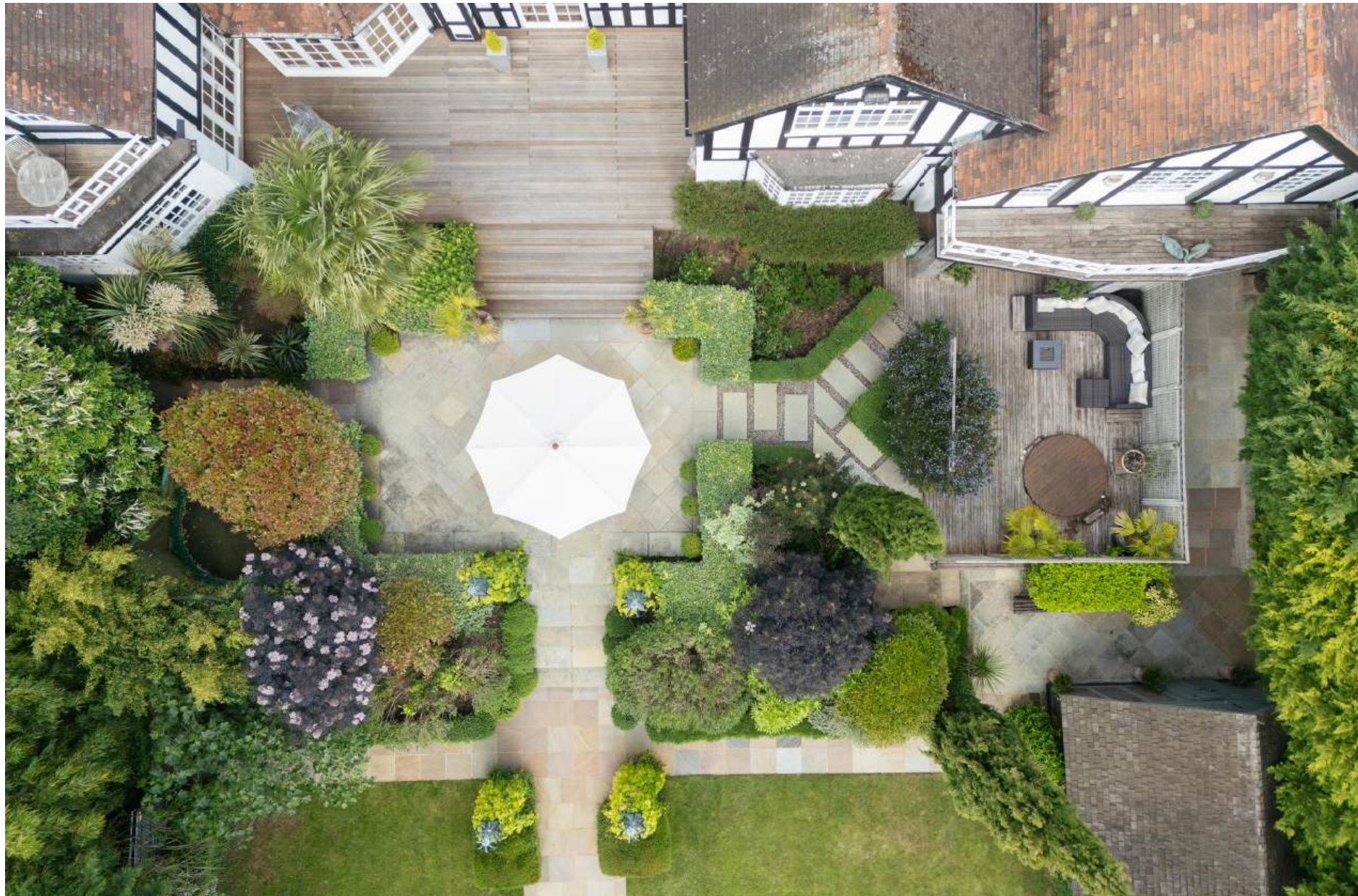














# POINTS OF *Interest*



## **Towns and Cities**

Eton 4 miles  
Windsor 5 miles  
Marlow 5.5 miles  
Henley 9 miles  
London 29.9 miles

## **Pubs & Restaurants**

The Fat Duck, Bray  
Roux at Skindles, Taplow Riverside  
Soho River House, Oakley Court

## **Train Stations**

Maidenhead Station 1.2 miles  
(London Paddington from 24 minutes)

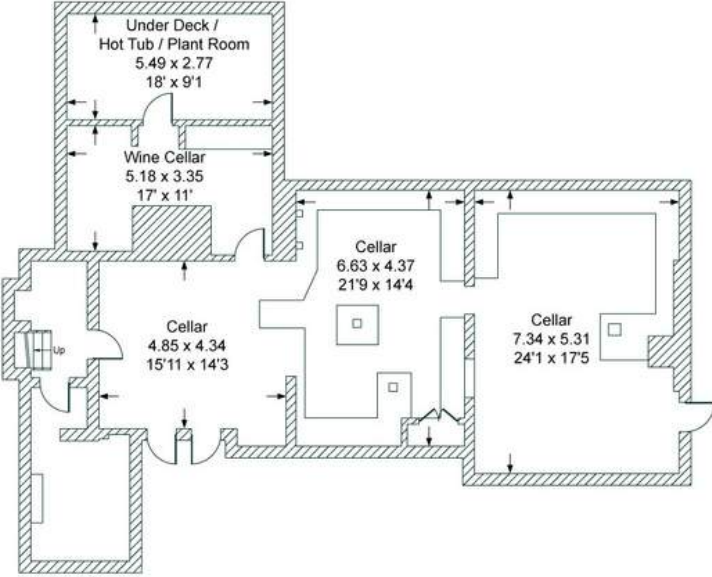
## **Airports**

London Heathrow 11 miles  
London City 38.7 miles

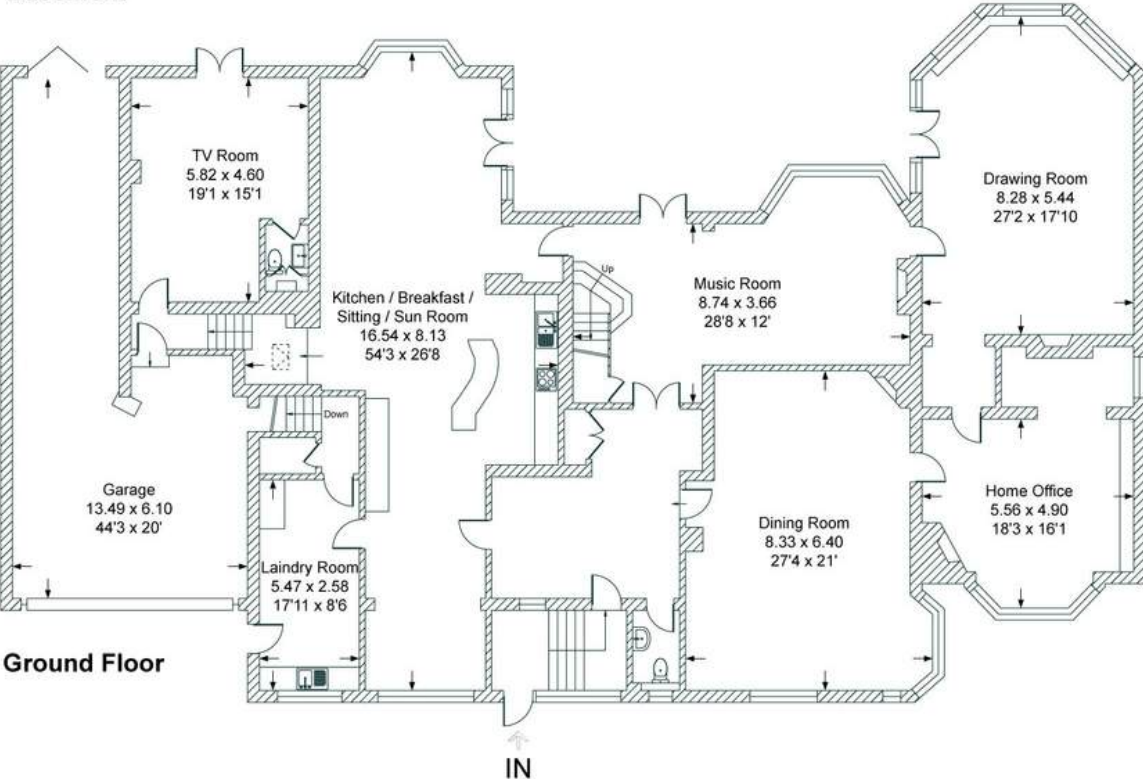


# FLOORPLANS

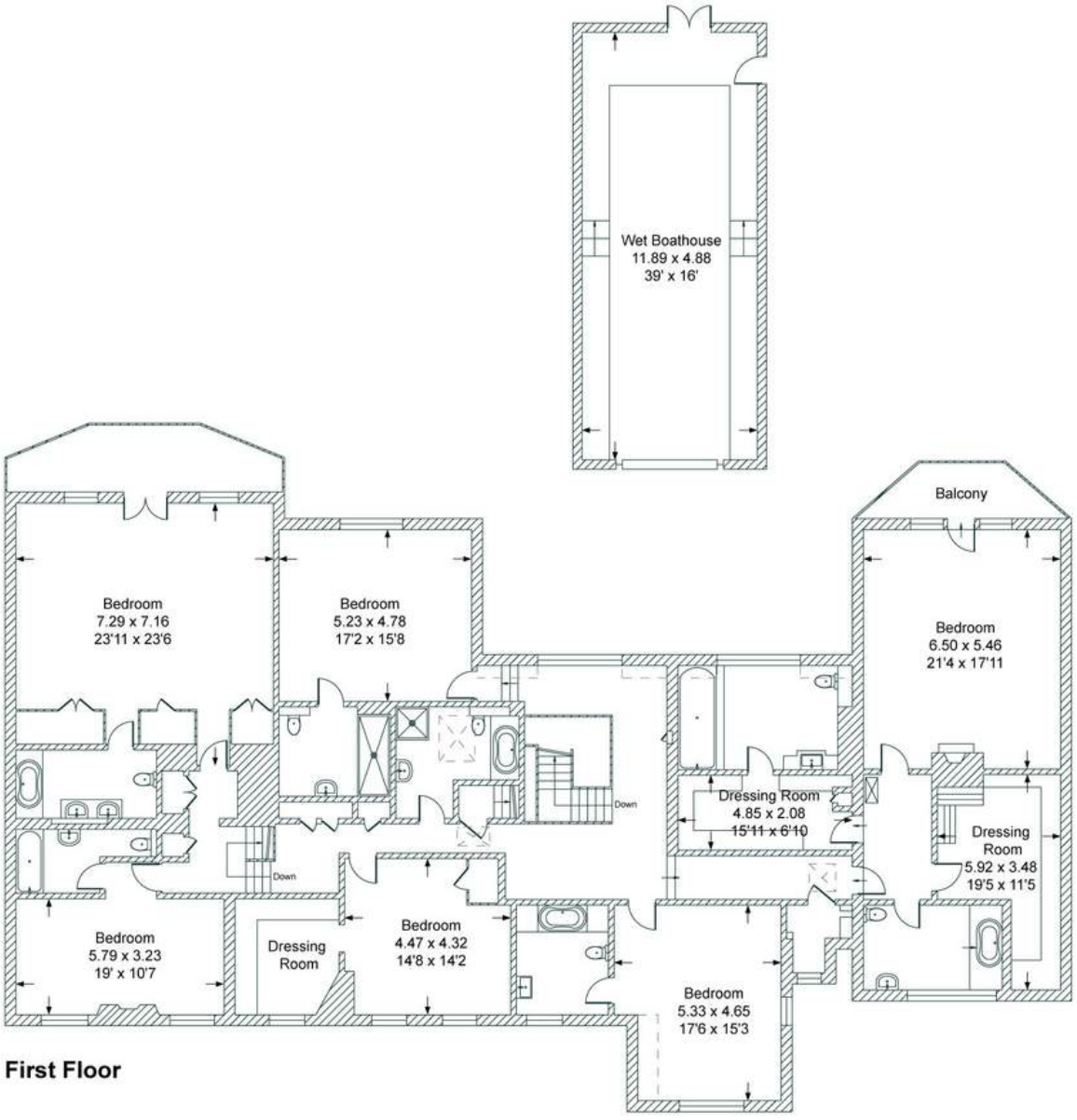
## *Waterside House*



**Basement**



**Ground Floor**



**First Floor**

Total - 44.1 sq m / 10, 162 sq ft  
 House - 828.4 sq m / 8, 915 sq ft | Garage- 157.8 sq m / 623 sq ft | Outbuilding- 57.9 sq m / 624 sq ft

# AREA GUIDE

## *Berkshire*

The Royal County of Berkshire is the jewel in the home counties crown. It's no surprise that a county fit for a Monarch is one of the most attractive locations for those making the move out of London, with a wealth of exceptional schools and fast commuter links to the capital. There's no shortage of leisure activities either with racing at Windsor, Ascot and Newbury as well as polo at The Guards Polo Club, Cowarth Park and The Royal Berkshire Polo Club. Fine dining is a particular highlight and Bray is the county's worthy epicentre, with the Roux Brothers' Waterside Inn and Heston Blumenthal's Fat Duck and The Hind's Head.

### **Walking - Basildon Park**

Walk around four different trails through 400 acres of parkland and Woodland.

### **Eating Out - The Hind's Head, Bray**

Food that is all cooked with exceptional technical dexterity and consummate culinary imagination.

### **Event - Royal Ascot, Ascot Racecourse**

Arguably the most prestigious horse racing event in the world. Experience five days of not only the finest horses, jockeys, trainers from around the world but exceptional fashion and cuisine.

### **Day Out - Windsor Great Park**

A Royal Park of 4,991 acres, including a deer park, to the south of the town of Windsor.



# ABOUT *The Country House Department*



Established in June 2020, The Country House Department specialises exclusively in the sale of exceptional country houses. With a team of 20 dedicated professionals, we are renowned for delivering outstanding client service, innovative marketing strategies and an unrivalled understanding of the rural property market.

Each of our regions is covered by a highly experienced agent who possesses in-depth, local knowledge and a proven track record of selling premium properties in their area. This regional expertise ensures that every home is marketed with insight, precision and a genuine understanding of its unique appeal. Importantly, every property benefits from a single, dedicated point of contact, providing continuity, clarity and the very highest level of personal service throughout the entire sales process.

Prioritising quality over quantity, we focus on representing only the finest houses. As a result, we are fast becoming the trusted agent for premium properties across 15 counties, including Gloucestershire, Oxfordshire, Wiltshire, Berkshire, Buckinghamshire, Surrey, Hampshire, Northamptonshire, Worcestershire, Warwickshire, Somerset, Essex, Cambridgeshire, Suffolk and West Sussex.

← *Sold by The Country House Department*



THE  
COUNTRY  
HOUSE  
DEPT.



03332 340 901  
[info@thecountryhousedepartment.com](mailto:info@thecountryhousedepartment.com)  
[thecountryhousedepartment.com](http://thecountryhousedepartment.com)

IMPORTANT NOTICE: The Country House Department gives notice that: 1. These particulars do not constitute an offer or contract or part thereof. 2. All descriptions, photographs and plans are for guidance only and should not be relied upon as statements or representations of fact. All measurements are approximate and not necessarily to scale. Any prospective purchaser must satisfy themselves of the correctness of the information within the particulars by inspection or otherwise. 3. The Country House Department does not have any authority to give any representations or warranties whatsoever in relation to this property (including but not limited to planning/building regulations), nor can it enter into any contract on behalf of the Vendor. 4. The Country House Department does not accept responsibility for any expenses incurred by prospective purchasers in inspecting properties which have been sold, let or withdrawn. 5. The property will be sold subject to and with the benefit of all wayleaves, covenants, easements and rights of way, whether mentioned in these particulars or not. Photographs taken June 2025. Particulars prepared in May 2026.