


10 CROMWELL GARDENS

Magazine 



THE
COUNTRY
HOUSE
DEPT.





10 CROMWELL *Gardens*

Marlow, Buckinghamshire, SL7 1BG



Tucked quietly within one of Marlow's most desirable central enclaves, this beautifully composed family home balances space, light and everyday ease with rare finesse. Arranged across three thoughtfully designed floors, the house unfolds with a natural rhythm; from the elegant principal reception room, where south-facing doors open onto sunlit decking, to the expansive open-plan kitchen, dining and living space where light pours in and life gathers around a generous island, complemented by integrated Miele appliances throughout the kitchen. A separate study offers calm for work, while a versatile playroom or media room sits above the double garage. Outside, the landscaped garden has been carefully curated with paving, lawn and terraces for long afternoons. Upstairs, the principal suite enjoys its own dressing room, while the upper floor provides two further en suite bedrooms, ideal for guests or growing families, all moments from Marlow's vibrant heart.







THE FINER *Details*

Bedrooms

5

Reception Rooms

4

Bath/Shower Rooms

4

Double Garaging

What3Words

//intrigues.hook.intention

Co-Ordinates

551°34'19"N , 000°46'24"W

Services

Mains water, electricity, and drainage
Gas fired central heating

EPC

Band C

Council Tax

Band G

Local Authority

Buckinghamshire Council











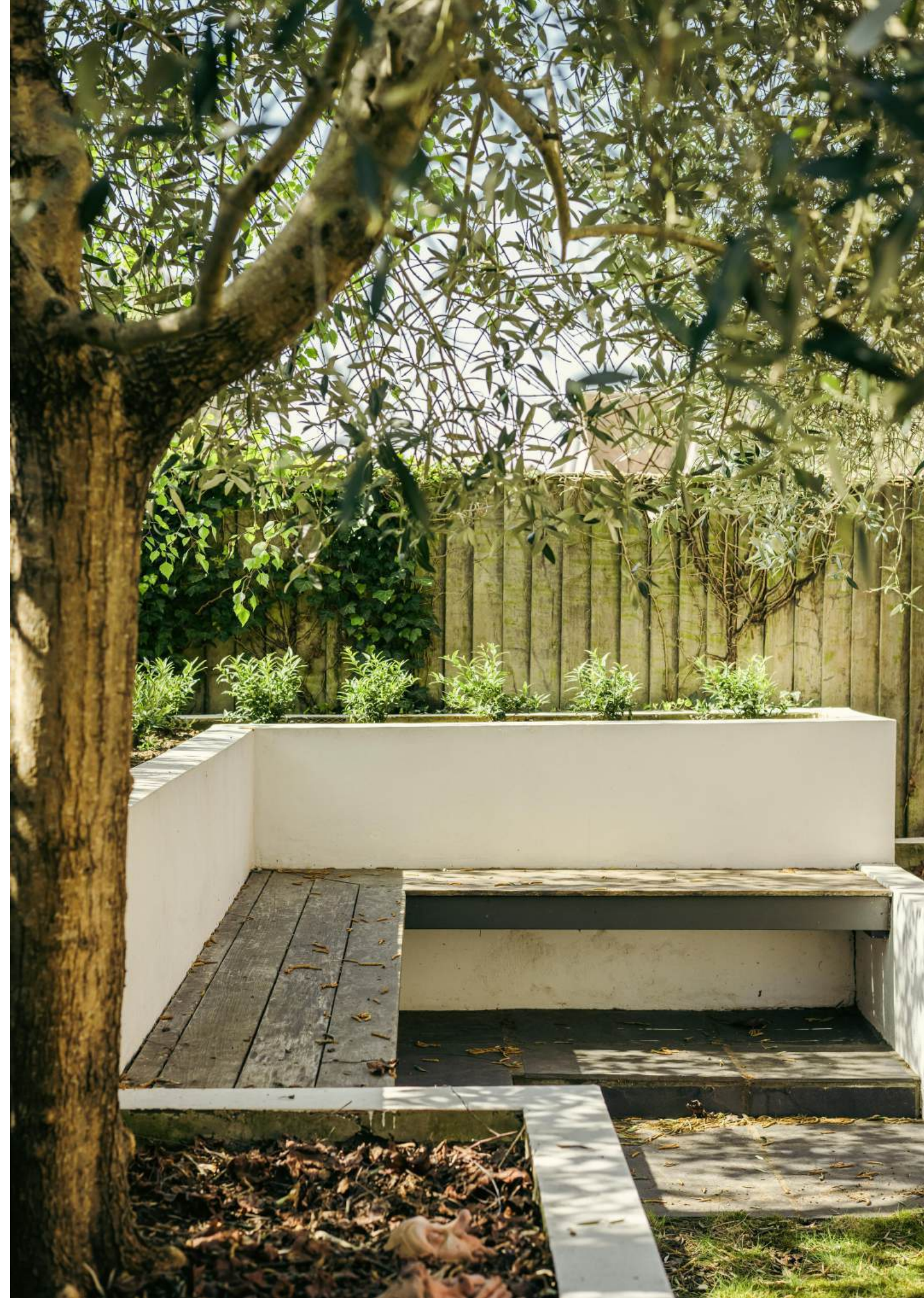
ABOUT THIS *Area*



Living in the centre of Marlow offers an easy, well-balanced way of life, where daily essentials and small pleasures are all within comfortable reach. The High Street provides a thoughtful mix of independent shops, familiar names, cafés and well-regarded restaurants, creating a lively but manageable atmosphere throughout the week. The River Thames is just moments away, offering space to walk, run or simply pause by the water, while nearby parks and green spaces add to the sense of openness. There is a genuine community feel, with regular local events and a pace that feels both active and relaxed. For those commuting, the train station offers a straightforward route into London, making it a practical choice as well as an enjoyable place to live. Altogether, Marlow strikes a pleasing balance between convenience, character and a strong sense of place.

There are a number of golf courses locally including Temple, Harleyford and Henley-on-Thames. The area is renowned for quality education, Marlow offers prep schools to secondary schools, such as Sir William Borlase's Grammar School and Great Marlow School. Marlow has a train service via the Elizabeth Line to Paddington with fast trains also accessible from High Wycombe providing a 25-minute journey into London Marylebone. The M40/M4 motorways are accessed from the A404 which passes the town.











POINTS OF *Interest*



Towns and Cities

Marlow 0.2 miles
Henley on Thames 5.3 miles
Beaconsfield 7 miles
Central London 34 miles

Pubs & Restaurants

The Hand and Flowers, Marlow
Cliveden House, Cliveden
The Waterside Inn, Bray

Train Stations

Marlow Station 0.4 miles
(London Paddington from 46 mins)
Maidenhead Station
(London Paddington from 24 mins)
Beaconsfield Station miles
(London Marylebone from 22 mins)

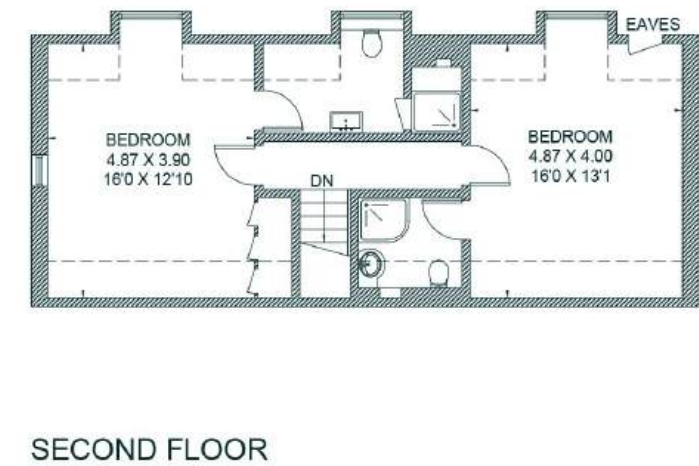
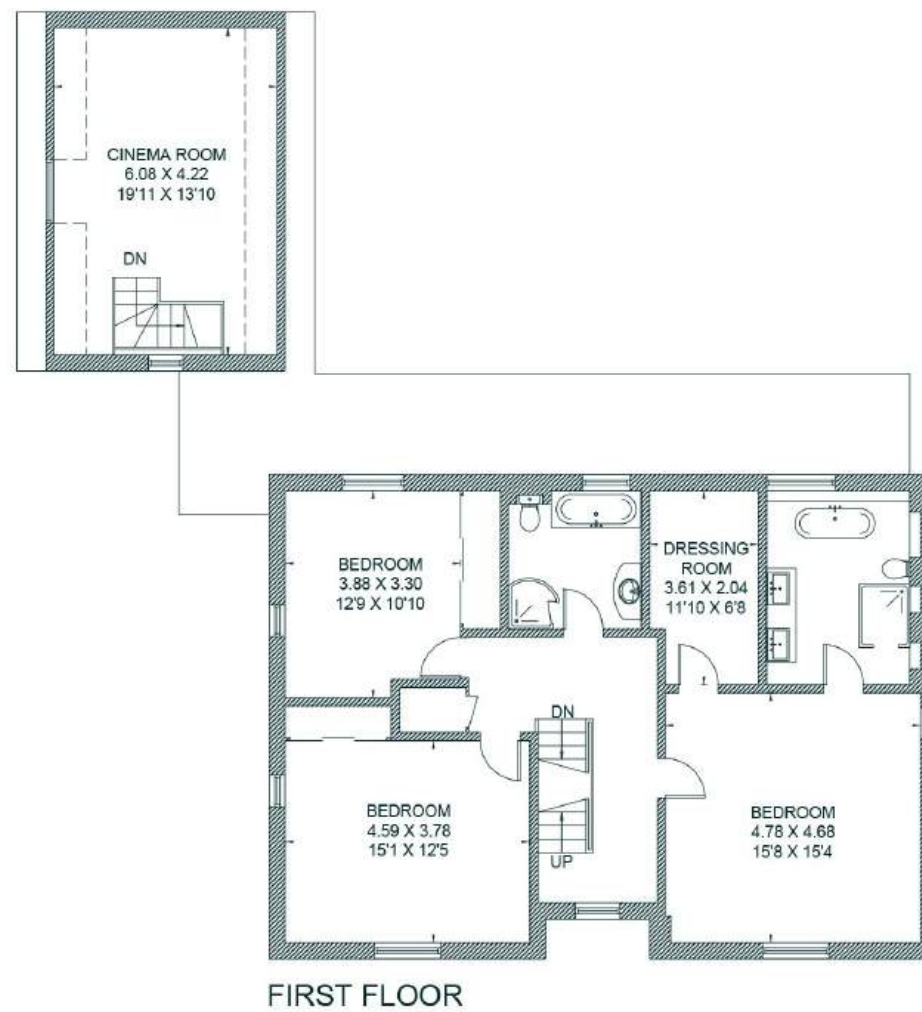
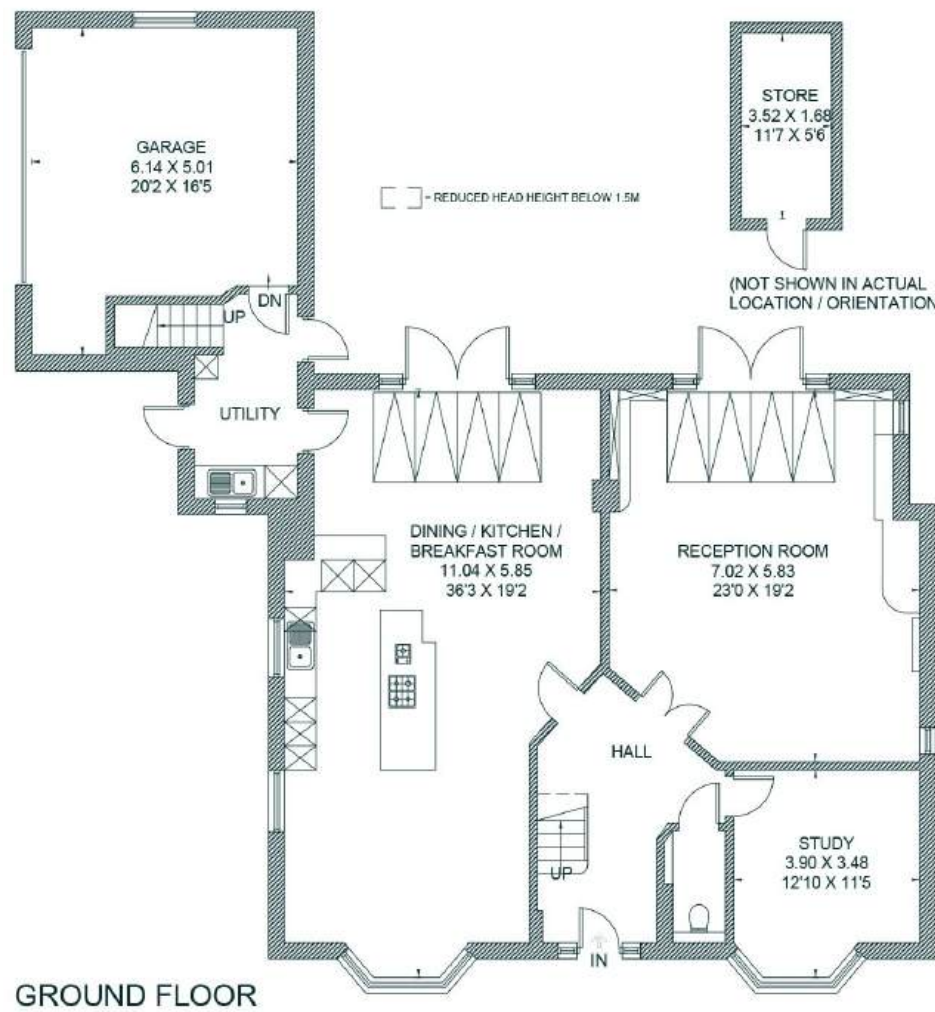
Airports

London Heathrow Airport 16 miles
London Gatwick Airport 56 miles
London Stanstead Airport 68 miles



FLOORPLANS

10 Cromwell Gardens



Total - 351.9 sq m / 3,787 sq ft
 House - 346 sq m / 3,724 sq ft | Store - 5.9 sq m / 63 sq ft

AREA GUIDE

Buckinghamshire ➡

With its chocolate box villages, historic towns, quality attractions and stunning countryside along with its cosy pubs, Buckinghamshire is formed partly by Chiltern landscapes that inspired literary residents and has a rich sporting heritage. There are lots of things to do in Buckinghamshire. Walk in Roald Dahl's footsteps through medieval villages to historic coaching inns. Or nose in drawing rooms in Italianate mansions, the backdrop for scandals like the Profumo Affair. This colourful southeast county has a high-octane side. Formula One cars rev on Grand Prix circuits and crews of rowers paddle on Olympic rowing lakes. Buckinghamshire has something for everyone.

Walking - The Chiltern Way

The Chiltern Way is a route of 134 miles through Bedfordshire, Buckinghamshire, Hertfordshire & Oxfordshire and offers breath taking views of the rolling landscape.

Eating Out - The Mash Inn, Bennett End

A restaurant with rooms located in the hamlet of Bennett End. The small restaurant features an open kitchen where they cook simply but skillfully over a bespoke wood-fired grill.

Event - The British Grand Prix

Home of the British Grand Prix, the Silverstone circuit straddles the Northamptonshire / Buckinghamshire boarder.

Day Out - Waddesdon Manor

Built by Baron Ferdinand de Rothschild to exhibit his collections of art treasures. The Victorian garden is considered one of the finest in Britain.





THE
COUNTRY
HOUSE
DEPT.



03332 340 901
info@thecountryhousedepartment.com
thecountryhousedepartment.com

IMPORTANT NOTICE: The Country House Department gives notice that: 1. These particulars do not constitute an offer or contract or part thereof. 2. All descriptions, photographs and plans are for guidance only and should not be relied upon as statements or representations of fact. All measurements are approximate and not necessarily to scale. Any prospective purchaser must satisfy themselves of the correctness of the information within the particulars by inspection or otherwise. 3. The Country House Department does not have any authority to give any representations or warranties whatsoever in relation to this property (including but not limited to planning/building regulations), nor can it enter into any contract on behalf of the Vendor. 4. The Country House Department does not accept responsibility for any expenses incurred by prospective purchasers in inspecting properties which have been sold, let or withdrawn. 5. The property will be sold subject to and with the benefit of all wayleaves, covenants, easements and rights of way, whether mentioned in these particulars or not. Photographs taken April 2026. Particulars prepared in April 2026.