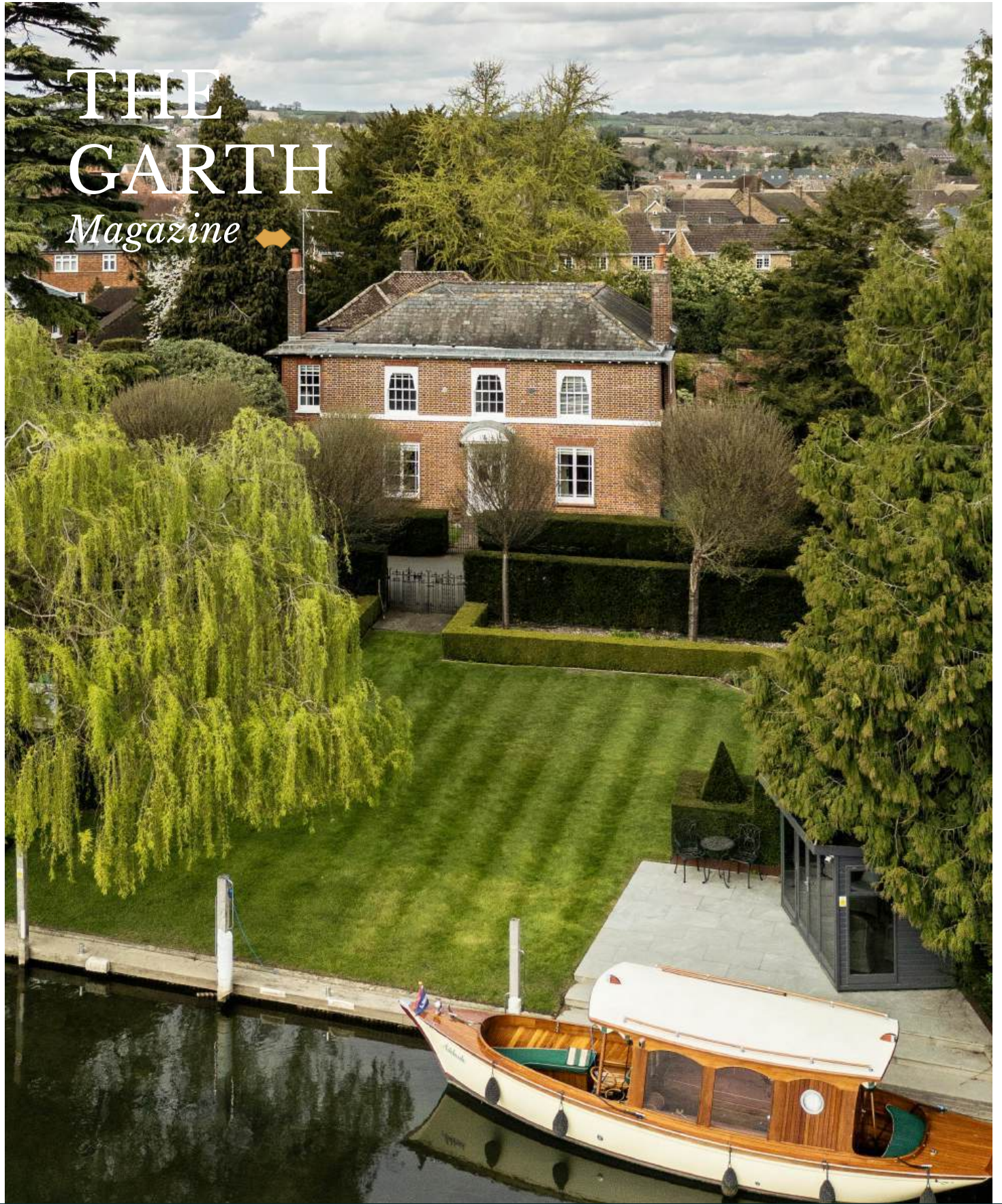


# THE GARTH

*Magazine* 



THE  
COUNTRY  
HOUSE  
DEPT.





# THE *Garth*

Mill Road, Marlow, Buckinghamshire, SL7 1QB



Set quietly along the banks of the Thames, moments from the gentle rhythm of Marlow Lock, The Garth is an exceptional Grade II listed Georgian house of rare presence and provenance. Behind its handsome red brick façade lies a home that unfolds with quiet confidence, elegant, beautifully balanced, and deeply connected to its surroundings. From the lawned riverside garden, the view is nothing short of captivating, taking in Marlow Bridge, the spire of All Saints Church and the timeless charm of The Compleat Angler. Rich in period detail yet thoughtfully refined for modern living, The Garth offers a remarkable opportunity to own a piece of Marlow's architectural and social history, all within an easy stroll of the town's vibrant heart.







# THE FINER *Details*

## Bedrooms

4

## Reception Rooms

4

## Bath/Shower Rooms

2

## Mooring

1

## Double Garaging

## Gated Driveway Parking

## River Garden and Summer House

## What3Words

///define.headrest.cocktail

## Co-Ordinates

51°34'05"N , 000°46'09"W

## Services

Mains water, drainage and electricity

Gas fired central heating

## Listing

Grade II

## EPC

?

## Council Tax

Band H

## Local Authority

Buckinghamshire Council













## ABOUT THIS *Area*



Mill Road and the area around Marlow Lock offer a quieter, more settled side of the town. Characterful Georgian and Victorian houses line the river, many with gardens leading down to the water, creating a strong sense of place. The Thames is a constant backdrop, with boats passing gently through the lock and weir. It's an easy, level walk into the centre, where Marlow's cafés, restaurants and shops are close at hand. Altogether, it's a location that balances period charm with everyday convenience, well suited to those who value both the river setting and access to the town.

There are a number of golf courses locally including Temple, Harleyford and Henley-on-Thames. The area is renowned for quality education, Marlow offers prep schools to secondary schools, such as Sir William Borlase's Grammar School and Great Marlow School. Marlow has a train service via the Elizabeth Line to Paddington with fast trains also accessible from High Wycombe providing a 25-minute journey into London Marylebone. The M40/M4 motorways are accessed from the A404 which passes the town.





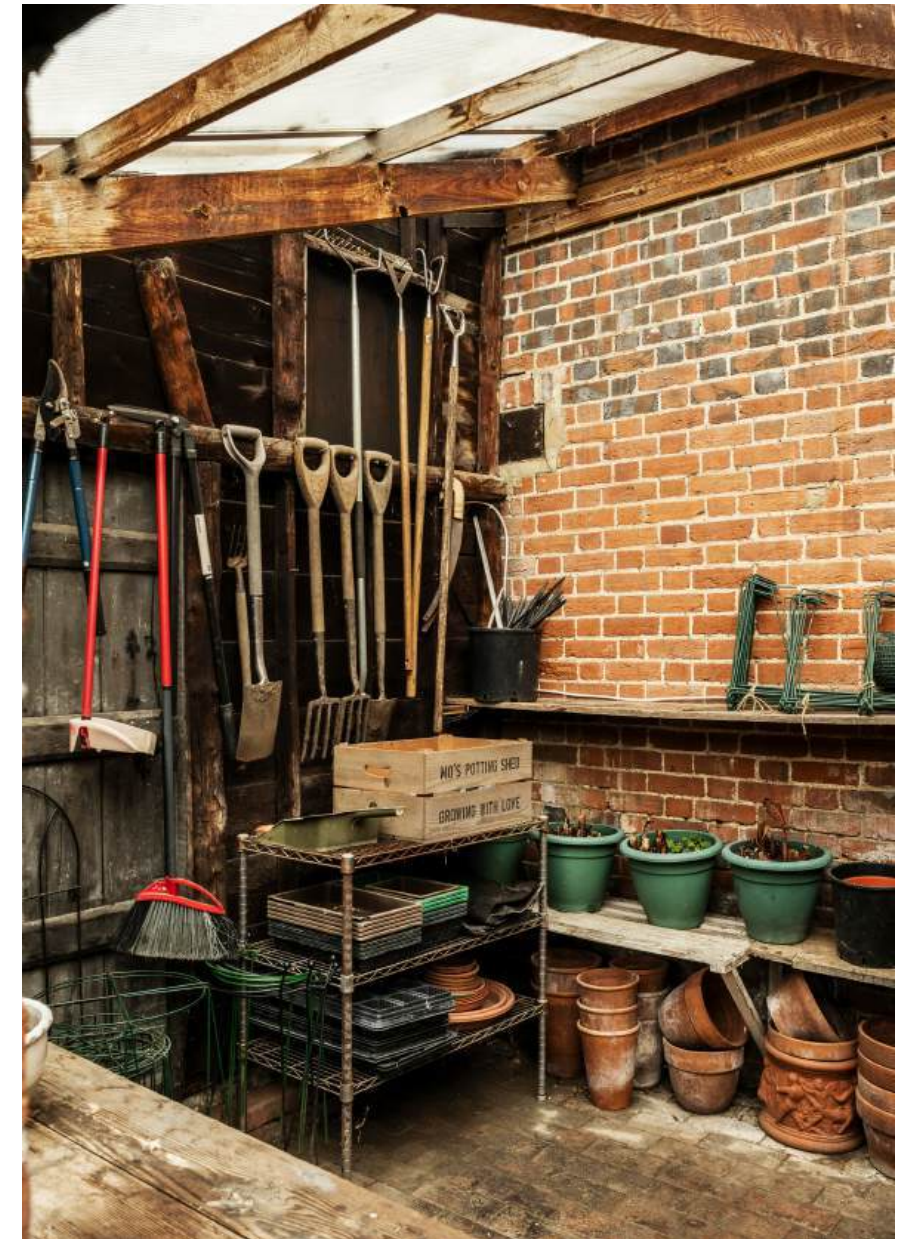






















The Garth

31

# POINTS OF *Interest*



## **Towns and Cities**

Marlow 0.4 miles  
Henley on Thames 5.3 miles  
Beaconsfield 7 miles  
Central London 34 miles

## **Pubs & Restaurants**

The Hand and Flowers, Marlow  
Cliveden House, Cliveden  
The Waterside Inn, Bray

## **Train Stations**

Marlow Station 0.4 miles  
(London Paddington from 46 mins)  
Maidenhead Station  
(London Paddington from 24 mins)  
Beaconsfield Station miles  
(London Marylebone from 22 mins)

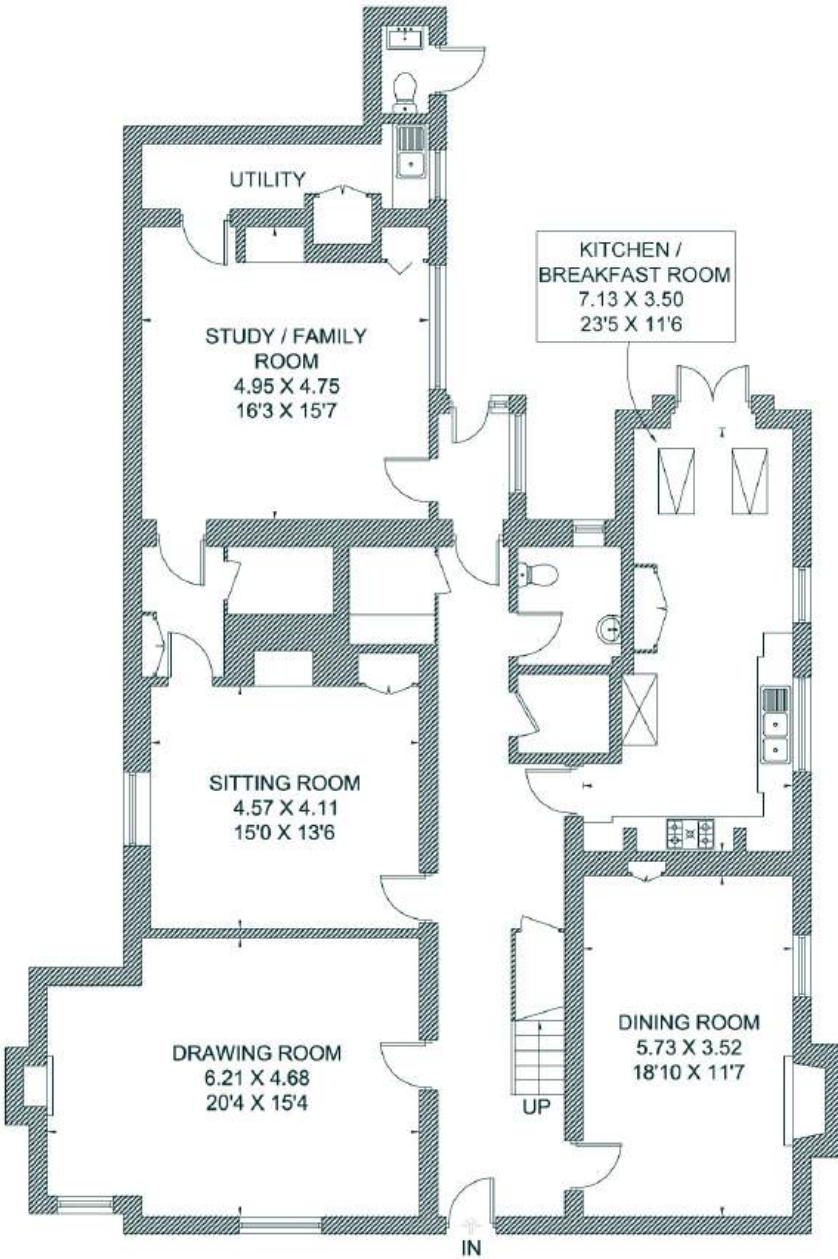
## **Airports**

London Heathrow Airport 16 miles  
London Gatwick Airport 56 miles  
London Stanstead Airport 68 miles

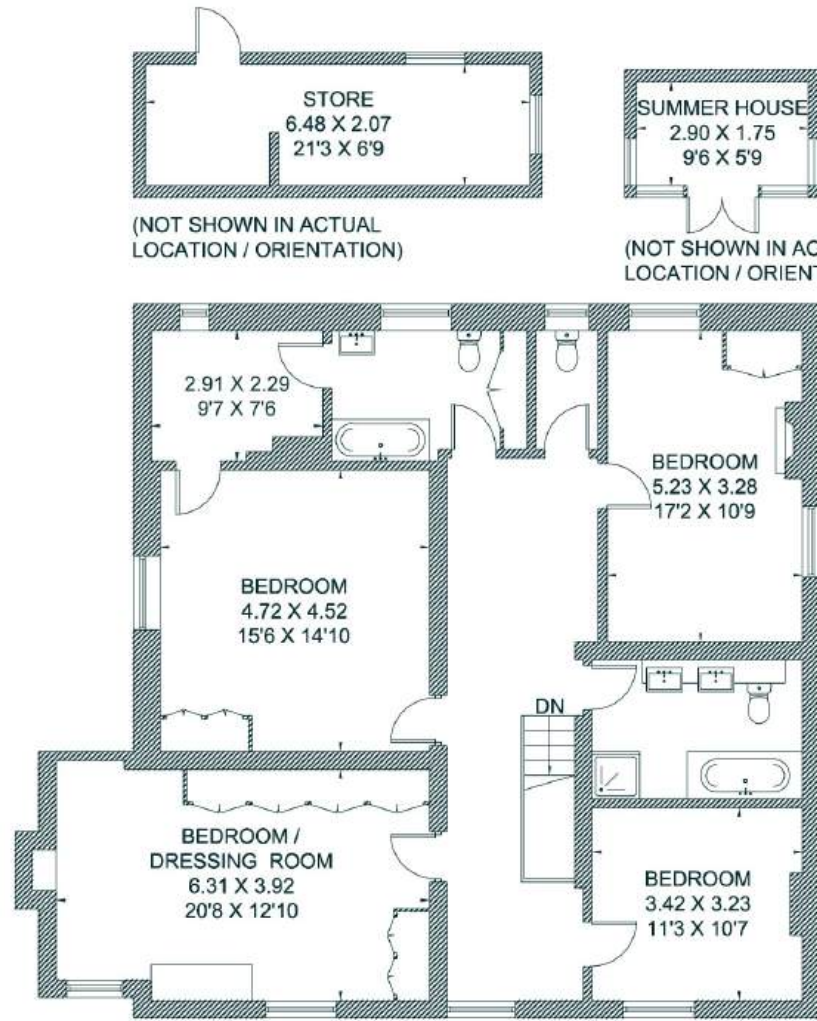


# FLOORPLANS

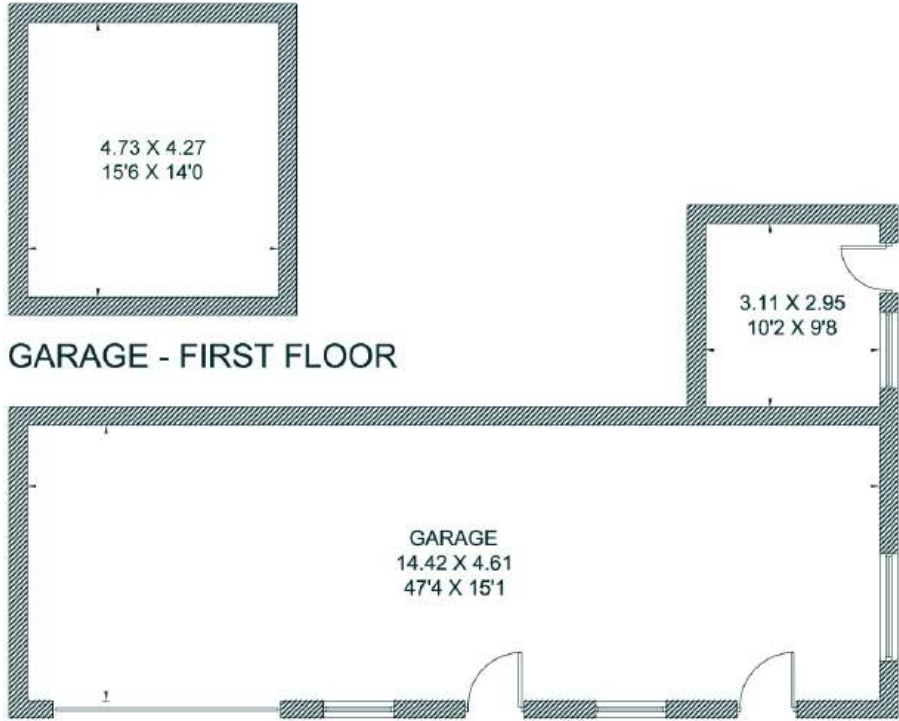
## *The Garth*



GROUND FLOOR



FIRST FLOOR



GARAGE - FIRST FLOOR

GARAGE - GROUND FLOOR

Total - 417.8 sq m / 4,497 sq ft  
 House - 302.2 sq m / 3,253 sq ft | Garage - 67.0 sq m / 721 sq ft | Outbuilding - 48.6 sq m / 523 sq ft

# AREA GUIDE

## *Buckinghamshire* ➡

With its chocolate box villages, historic towns, quality attractions and stunning countryside along with its cosy pubs, Buckinghamshire is formed partly by Chiltern landscapes that inspired literary residents and has a rich sporting heritage. There are lots of things to do in Buckinghamshire. Walk in Roald Dahl's footsteps through medieval villages to historic coaching inns. Or nose in drawing rooms in Italianate mansions, the backdrop for scandals like the Profumo Affair. This colourful southeast county has a high-octane side. Formula One cars rev on Grand Prix circuits and crews of rowers paddle on Olympic rowing lakes. Buckinghamshire has something for everyone.

### **Walking - The Chiltern Way**

The Chiltern Way is a route of 134 miles through Bedfordshire, Buckinghamshire, Hertfordshire & Oxfordshire and offers breath taking views of the rolling landscape.

### **Eating Out - The Mash Inn, Bennett End**

A restaurant with rooms located in the hamlet of Bennett End. The small restaurant features an open kitchen where they cook simply but skillfully over a bespoke wood-fired grill.

### **Event - The British Grand Prix**

Home of the British Grand Prix, the Silverstone circuit straddles the Northamptonshire / Buckinghamshire boarder.

### **Day Out - Waddesdon Manor**

Built by Baron Ferdinand de Rothschild to exhibit his collections of art treasures. The Victorian garden is considered one of the finest in Britain.





THE  
COUNTRY  
HOUSE  
DEPT.



03332 340 901  
[info@thecountryhousedepartment.com](mailto:info@thecountryhousedepartment.com)  
[thecountryhousedepartment.com](http://thecountryhousedepartment.com)

IMPORTANT NOTICE: The Country House Department gives notice that: 1. These particulars do not constitute an offer or contract or part thereof. 2. All descriptions, photographs and plans are for guidance only and should not be relied upon as statements or representations of fact. All measurements are approximate and not necessarily to scale. Any prospective purchaser must satisfy themselves of the correctness of the information within the particulars by inspection or otherwise. 3. The Country House Department does not have any authority to give any representations or warranties whatsoever in relation to this property (including but not limited to planning/building regulations), nor can it enter into any contract on behalf of the Vendor. 4. The Country House Department does not accept responsibility for any expenses incurred by prospective purchasers in inspecting properties which have been sold, let or withdrawn. 5. The property will be sold subject to and with the benefit of all wayleaves, covenants, easements and rights of way, whether mentioned in these particulars or not. Photographs taken April 2026. Particulars prepared in April 2026.