

MULBERRY HOUSE

GUIDE PRICE

£1,350,000



A magnificent family home in a wonderful, rural setting within striking distance of the popular market town of Shipston on Stour

ADDRESS Mulberry House,
Ilmington Road,
Armscote,
Stratford-upon-Avon, CV37 8DH

LOCAL The Fuzzy Duck, Armscote
The Howard Arms, Ilmington
The Bower House, Shipston on Stour

**TOWNS
& TRAIN
STATIONS** Shipston on Stour 3 miles
Chipping Campden 6.8
Moreton-in-Marsh 9 miles
Stratford-upon-Avon 9 miles
Warwick 15.6 miles
Moreton-in-Marsh Station 9.4 miles ➡
London Paddington from 84 mins

THE
COUNTRY
HOUSE
DEPT.

51.7950° N - 1.8839° W



ABOUT THIS HOUSE

GENERAL

5
BEDROOMS

3
BATH/SHOWER
ROOMS

4
RECEPTION
ROOMS

SERVICES	Private drainage Oil fired central heating Mains water, metered from next door property
EPC	D
COUNCIL TAX	Band G
LOCAL AUTHORITY	Stratford-on-Avon

HOUSE AND GROUNDS

Nestled amongst beautiful countryside, with uninterrupted views is this fantastic family home. Approached through a set of metal gates across a herringbone brick driveway, Mulberry House sits in a wonderful spot surrounded by beautifully manicured gardens. Mulberry House has a warm and inviting feel, with a number of generously proportioned rooms - ideally suited for a family. The accommodation throughout is substantial and the numerous reception rooms allow a real flexibility as to how they could be used. There is ample space for a study/home office, studio, gym or children’s playroom. Highlights include a large, 20 ft kitchen/breakfast room, leading through to a conservatory providing views over the garden. A further highlight is the triple aspect drawing room which is flooded with natural light with double doors opening onto the rear gardens.

The five bedroom, three bath/shower room layout on the first floor makes for comfortable family living. There is the most superb games room situated on the first floor above the garage, perfect for those who enjoy entertaining. This is a versatile space with a bar and cloakroom.

Everything here is about scale, and the garden is no different; mostly laid to lawn, the gardens are planted with an array of well stocked flower beds as well as a wide variety of trees and shrubs.





ABOUT THIS AREA

OUR THOUGHTS ON SHIPSTON ON STOUR

Noted by the Sunday Times in March 2016 as one of the best places to live in the UK, Shipston on Stour is an historic, quaint but booming South Warwickshire market town with a strong sense of community spirit and full of charm.

Shipston's charming high street has a mix of traditional family-run and contemporary independent businesses along with other amenities including a doctor's surgery and cottage hospital, a butcher, a fishmonger and a number of pubs and restaurants.

A former working wool town, its annual events include Shipston Wool Fair and Shipston Proms over two weeks in June/July.

Nearby Chipping Campden, Moreton-in-Marsh and Broadway are wonderful places to visit but for more comprehensive shopping and recreational needs, Stratford-upon-Avon, Warwick, Cheltenham, Royal Leamington Spa and Banbury are all within striking distance as are a number of popular schools.

The M40 is accessible at junction 15 (Warwick) and junction 12 (Gaydon) and there is a regular train service from Moreton-in-Marsh to London Paddington and from Banbury to London Marylebone.







Conservatory



Games Room

Numerous reception rooms allow a real flexibility as to how they could be used



Drawing Room





Bedroom



Bedroom



Bedroom

A warm and inviting feel, with a number of generously proportioned rooms





Mulberry House



Garden

Everything here is about scale,
and the garden is no different



Garden





Pond



Garden



Garden

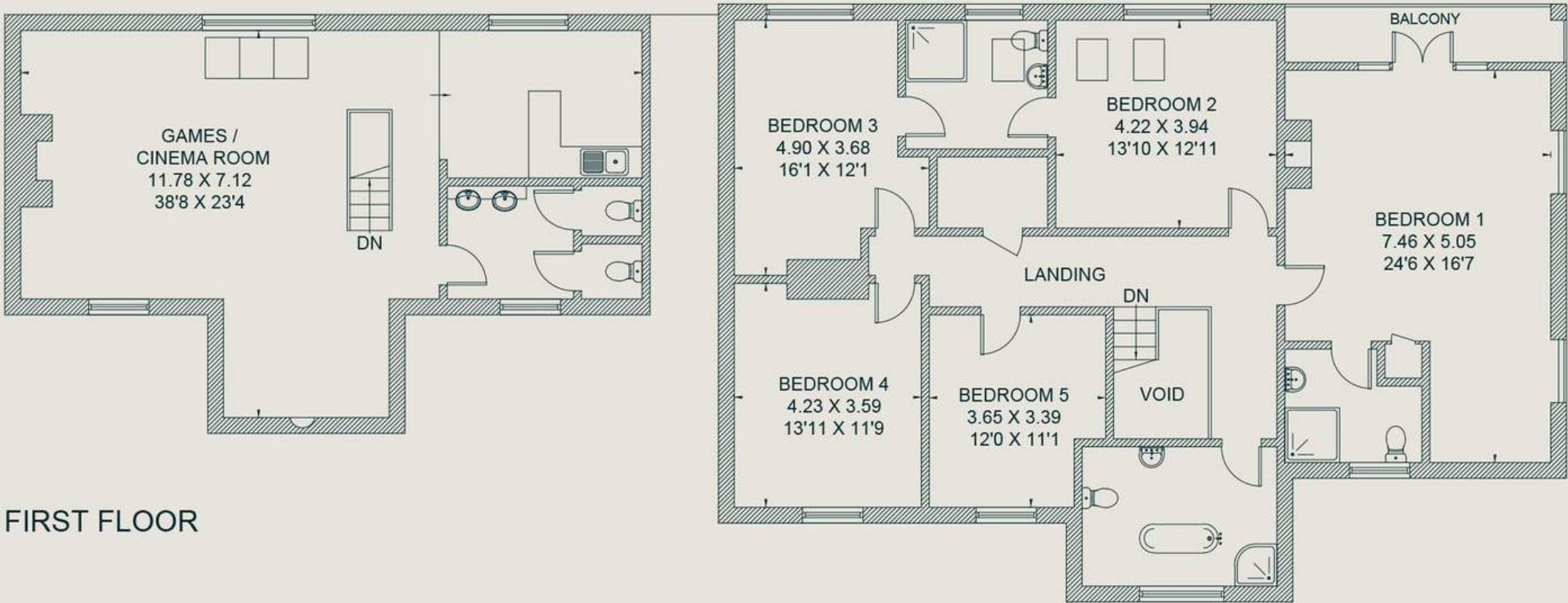
The gardens are planted with an array of well stocked flower beds as well as a wide variety of trees and shrubs.

FLOOR PLAN

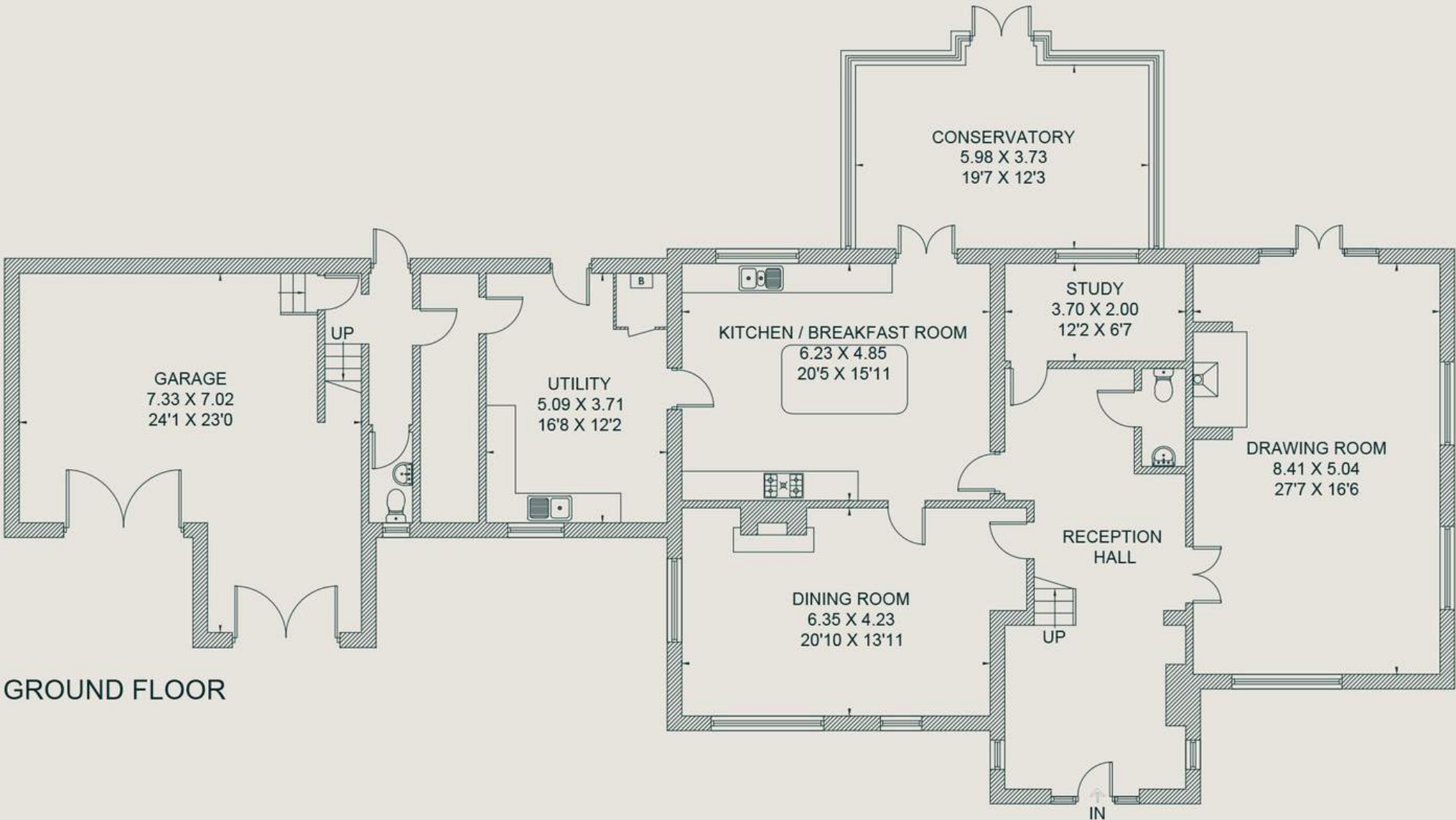
448.0 sq m / 4825 sq ft
TOTAL (INCLUDING GARAGE)

For identification purposes only.

IMPORTANT NOTICE: The Country House Department gives notice that: 1. These particulars do not constitute an offer or contract or part thereof. 2. All descriptions, photographs and plans are for guidance only and should not be relied upon as statements or representations of fact. All measurements are approximate and not necessarily to scale. Any prospective purchaser must satisfy themselves of the correctness of the information within the particulars by inspection or otherwise. 3. The Country House Department does not have any authority to give any representations or warranties whatsoever in relation to this property (including but not limited to planning/building regulations), nor can it enter into any contract on behalf of the Vendor. 4. The Country House Department does not accept responsibility for any expenses incurred by prospective purchasers in inspecting properties which have been sold, let or withdrawn. 5. The property will be sold subject to and with the benefit of all wayleaves, covenants, easements and rights of way, whether mentioned in these particulars or not. Photographs taken in January 2021. Particulars prepared in January 2021.



FIRST FLOOR



GROUND FLOOR



THE
COUNTRY
HOUSE
DEPT.

Andrew Russell

andrew@thecountryhousedepartment.com

Ben Bentley

ben@thecountryhousedepartment.com

The Country House Department Limited
John Eccles House
Robert Robinson Avenue
Oxford, OX4 4GP

T 01865 338 300

E info@thecountryhousedepartment.com

W thecountryhousedepartment.com