


WOODLANDS

Magazine 

SPEEDSTER

THE
COUNTRY
 HOUSE
DEPT.



WOODLANDS

Bramble Road, Daws Heath, SS7 2UN



For generations, locals knew Woodlands as “the big house”. Completed in 1890, it is one of the defining homes of the area. Today, after a four-year restoration with meticulous attention to period detail, it feels every inch the country house it always was: welcoming, generous and quietly confident.

At its heart sits one of the most impressive kitchens imaginable. The 13m x 7m DeVOL kitchen balances scale with warmth, connecting to a walk-in pantry and separate laundry room. Beneath a soaring vaulted ceiling, a dining and relaxed seating area is overlooked by a galleried office above, creating a natural hub for entertaining and family life.

Double doors to each principal ground-floor room give effortless flow for larger occasions and, when closed, preserve the intimacy expected of a house of this era.

Reclaimed herringbone oak parquet spans the entire ground floor, while the south-facing aspect draws light deep into the house.

The bespoke boot room in ‘Oval Room Blue’ offers a wealth of storage for outdoor items.

Despite its scale, Woodlands is first and foremost a home. Victorian wallpapers and carefully chosen Farrow & Ball and Little Greene colours sit alongside thoughtful details, from solid oak bathroom floors made from reclaimed French railway carriage boards to faithfully recreated period ceilings.

There are inviting places to pause throughout. The panelled library entrance hall with grand fireplace and woodburner, sets the tone, leading to several seating areas for quieter moments, including the snug with its hidden doorway and where a striking feature window overlooks the integral heated and carpeted four-bay garage with built in coffee station and stable-style doors with an enclosed courtyard beyond.

Upstairs, the principal bedroom suite offers privacy and calm. Positioned on the east side of the house and extending to over 400 sq ft, it includes a generous dressing room and ensuite. Outside, the wraparound garden is, like the house, beautifully zoned into a variety of seating areas.



WOODLANDS
DELIVERIES VIA THE GREY GATE





THE FINER *Details*

Bedrooms
5

Reception Rooms
5

Bath/Shower Rooms
3

Oak-panelled library hall

Pantry and Laundry Room

Boot Room

Galleried Office

Heated and Carpeted 4-Bay Garage

Acreage
0.28

Garage/workshop

What3Words
[///record.spot.fetch](https://www.what3words.com/record.spot.fetch)

Co-Ordinates
51°34'04"N , 000°37'03"E

Services
Mains water, electricity, and
drainage
Gas fired central heating

EPC
E

Council Tax
Band G

Local Authority
Castle Point Borough Council





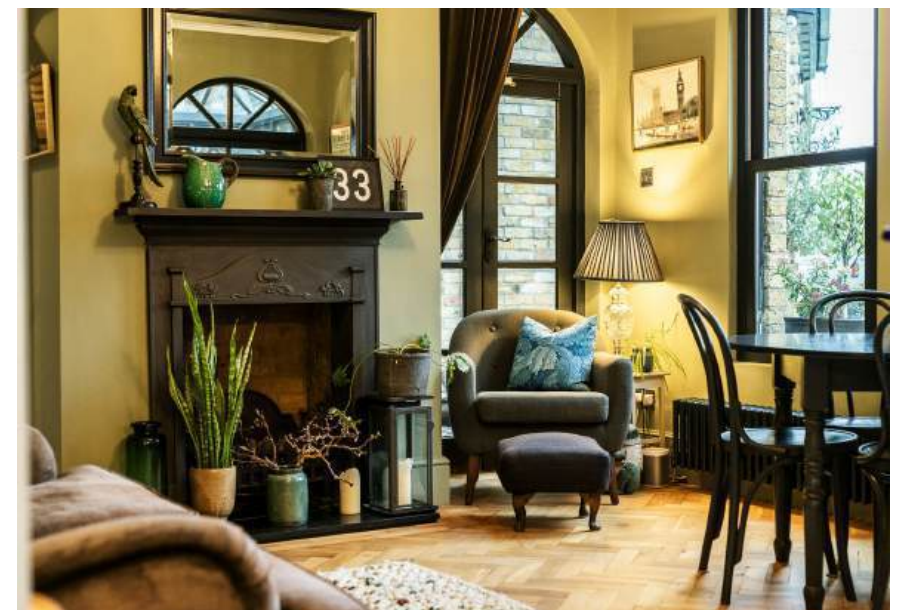
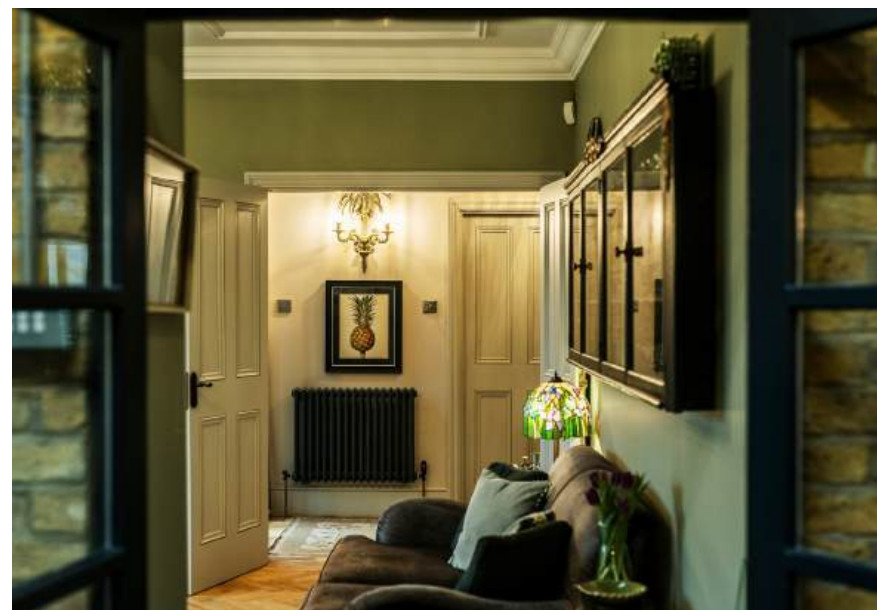
HIGHLANDS BVD.
25 A S V L

HILLYCROFT

Ultimate Collector Cars
Ultimate Collector Cars









ABOUT THIS *Area*



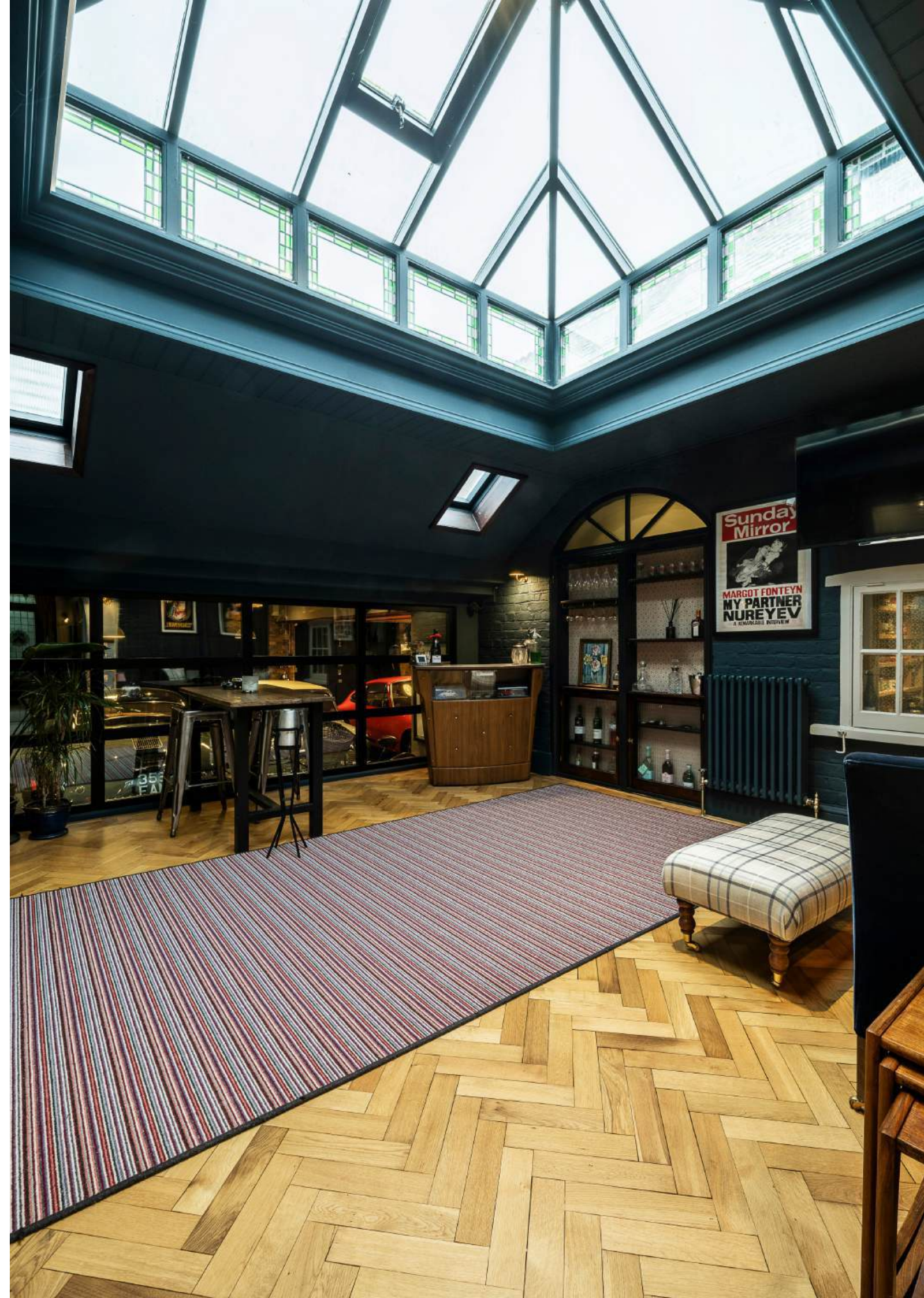
Daws Heath is a small and highly desirable hamlet with a distinctly semi-rural community feel. Woodlands is uniquely positioned, surrounded by seven ancient woodlands, all protected by the Essex Wildlife Trust. These ancient woodlands are interconnected, creating miles of walking routes directly from the house. In spring, bluebells carpet the landscape, while year-round the setting offers a sense of seclusion and connection to nature.

Just six minutes by car, Leigh-on-Sea provides a vibrant coastal lifestyle, with its independent shops, cafés and restaurants, beautiful Old Leigh fishing village, sailing club and sandy beach at Chalkwell. The area has a strong arts community and a reputation as one of Essex's most sought-after seaside towns, offering a rare balance of energy and charm.

The area is particularly well regarded for education, with a wide choice of respected state and private schools, including boys and girls grammar schools in Westcliff and Southend. Transport connections are excellent, with Rayleigh, Leigh and Benfleet stations providing direct services to London in around 40 minutes. Southend Airport is approximately 15 minutes away and Chelmsford under 30 minutes.

Woodlands offers the rare combination of country house living, ancient woodland on the doorstep and effortless access to the coast, schools and London.



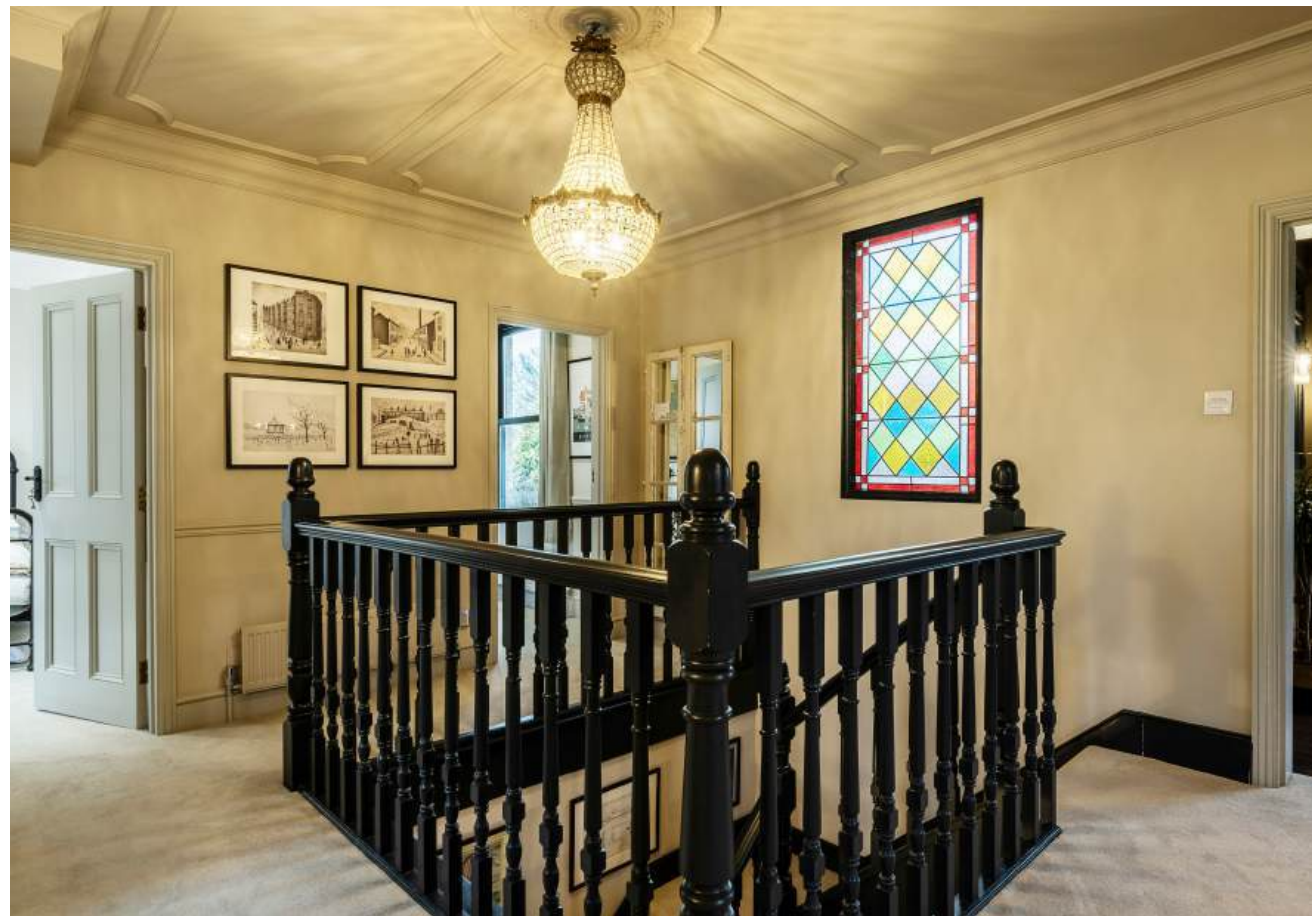




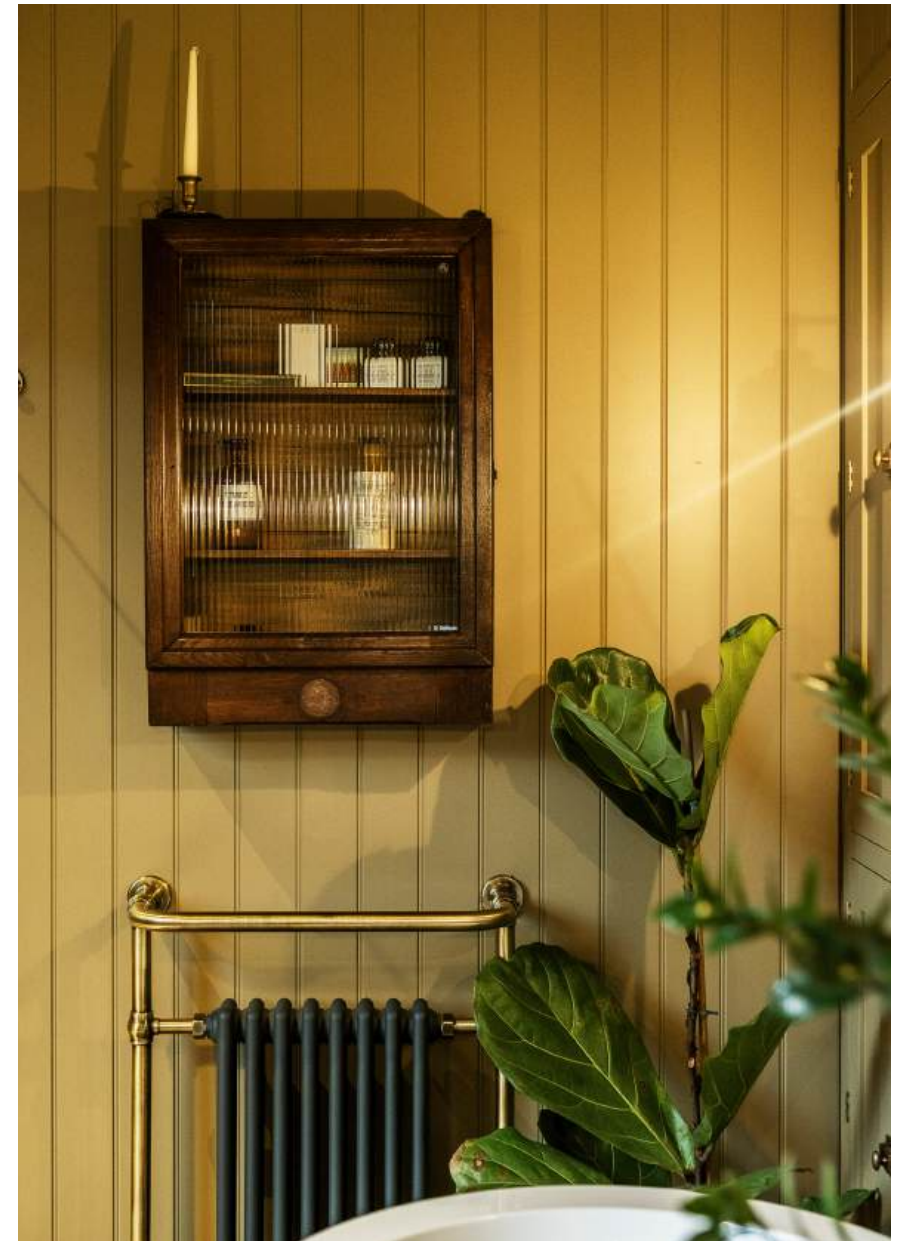
Lenksuna







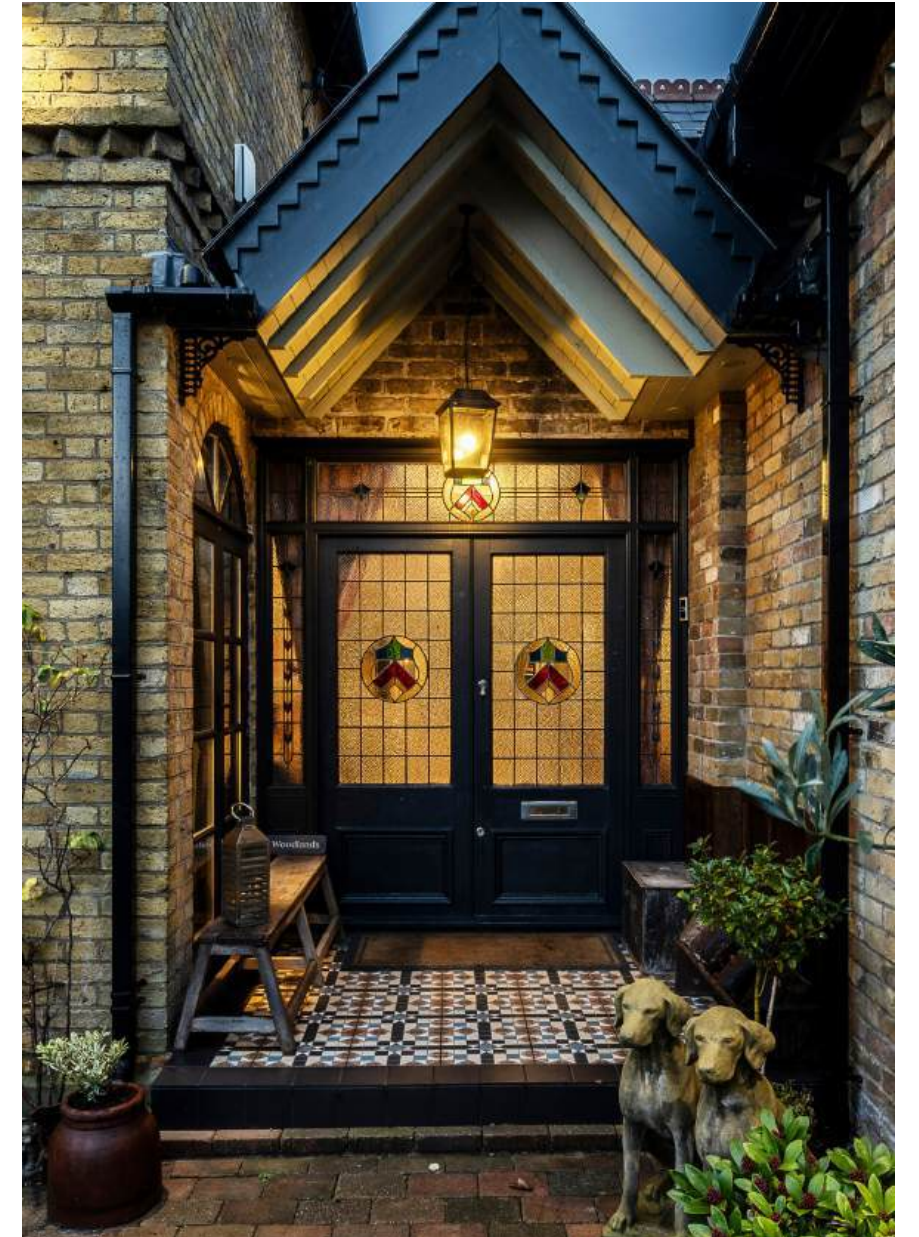














Brooke
Bond
Tea

POINTS OF *Interest*



Towns and Cities

Leigh-on-Sea 3 miles
Chelmsford 16 miles
London 38 miles

Pubs & Restaurants

Food Leigh-on-Sea (Michelin Guide), Leigh-On-Sea
The Boatyard, Leigh-on-Sea
The Roslin Hotel, Thorpe Bay
Cucina, Leigh-on-Sea

Train Stations

Leigh-on-Sea Station 3 miles
Benfleet Station 4 miles
Rayleigh Station 2.7 miles
London Fenchurch Street from 40 minutes

Airports

Southend Airport 4.5 miles
Stansted Airport 43 miles
London Gatwick Airport 57 miles
Heathrow Airport 75 miles



FLOORPLANS

Woodlands



Total - 98.9 sq m / 6,446 sq ft
 House - 571.3 sq m / 6,149 sq ft | Workshop - 27.6 sq m / 297 sq ft |

IMPORTANT NOTICE: The Country House Department gives notice that: 1. These particulars do not constitute an offer or contract or part thereof. 2. All descriptions, photographs and plans are for guidance only and should not be relied upon as statements or representations of fact. All measurements are approximate and not necessarily to scale. Any prospective purchaser must satisfy themselves of the correctness of the information within the particulars by inspection or otherwise. 3. The Country House Department does not have any authority to give any representations or warranties whatsoever in relation to this property (including but not limited to planning/building regulations), nor can it enter into any contract on behalf of the Vendor. 4. The Country House Department does not accept responsibility for any expenses incurred by prospective purchasers in inspecting properties which have been sold, let or withdrawn. 5. The property will be sold subject to and with the benefit of all wayleaves, covenants, easements and rights of way, whether mentioned in these particulars or not. Photographs taken June 2025 and January 2026. Particulars prepared in February 2026.

AREA GUIDE

Essex

Essex is a county of contrasts, and along this stretch of coastline that contrast feels especially strong. Leigh-on-Sea sits at the heart of a coastal community where estuary living meets creative energy and maritime heritage. Old Leigh still reflects its fishing village roots, while the Broadway brings independent cafés, wine bars and boutiques that define the town's character.

Within a short drive, the landscape shifts quickly. To the west and north, ancient woodland and country parks sit alongside modern city life. Daws Heath and Belfairs offer some of the most established woodland walking in south Essex, while Chelmsford brings shopping, restaurants, strong schooling and a thriving city atmosphere. With direct rail links into London from Leigh and Chelmsford, the area balances coast, countryside and capital living.

Walk - Daws Heath, Hadleigh Castle & Two Tree Island

Walking locally is varied and accessible. Daws Heath is a rare pocket of ancient woodland between Rayleigh and Thundersley, known for twisting footpaths, mature oak and chestnut trees and bluebells in spring.

Hadleigh Castle offers wide estuary views and open country park walks, while Two Tree Island feels wilder, with salt marsh, creeks and birdlife.

Event - Leigh Folk Festival & Chelmsford Cultural Events

The Leigh Folk Festival fills the town with music and food each summer. Chelmsford adds theatre, live music and seasonal events.

Day Out - Old Leigh, Chalkwell, Thorpe Bay

Old Leigh is ideal for seafood lunches and estuary views. Chalkwell offers beach huts and promenade walks, while Thorpe Bay feels quieter, with wide shoreline and sailing activity.





THE
COUNTRY
HOUSE
DEPT.



03332 340 901
info@thecountryhousedepartment.com
thecountryhousedepartment.com