

Adare



Penn Road, Beaconsfield
Buckinghamshire, HP9 2LW

51° 37' 04" N , 000° 38' 59" W
[what3words///effort.jumped.blaze](https://www.what3words.com/effort.jumped.blaze)

THE
COUNTRY
HOUSE
DEPT.



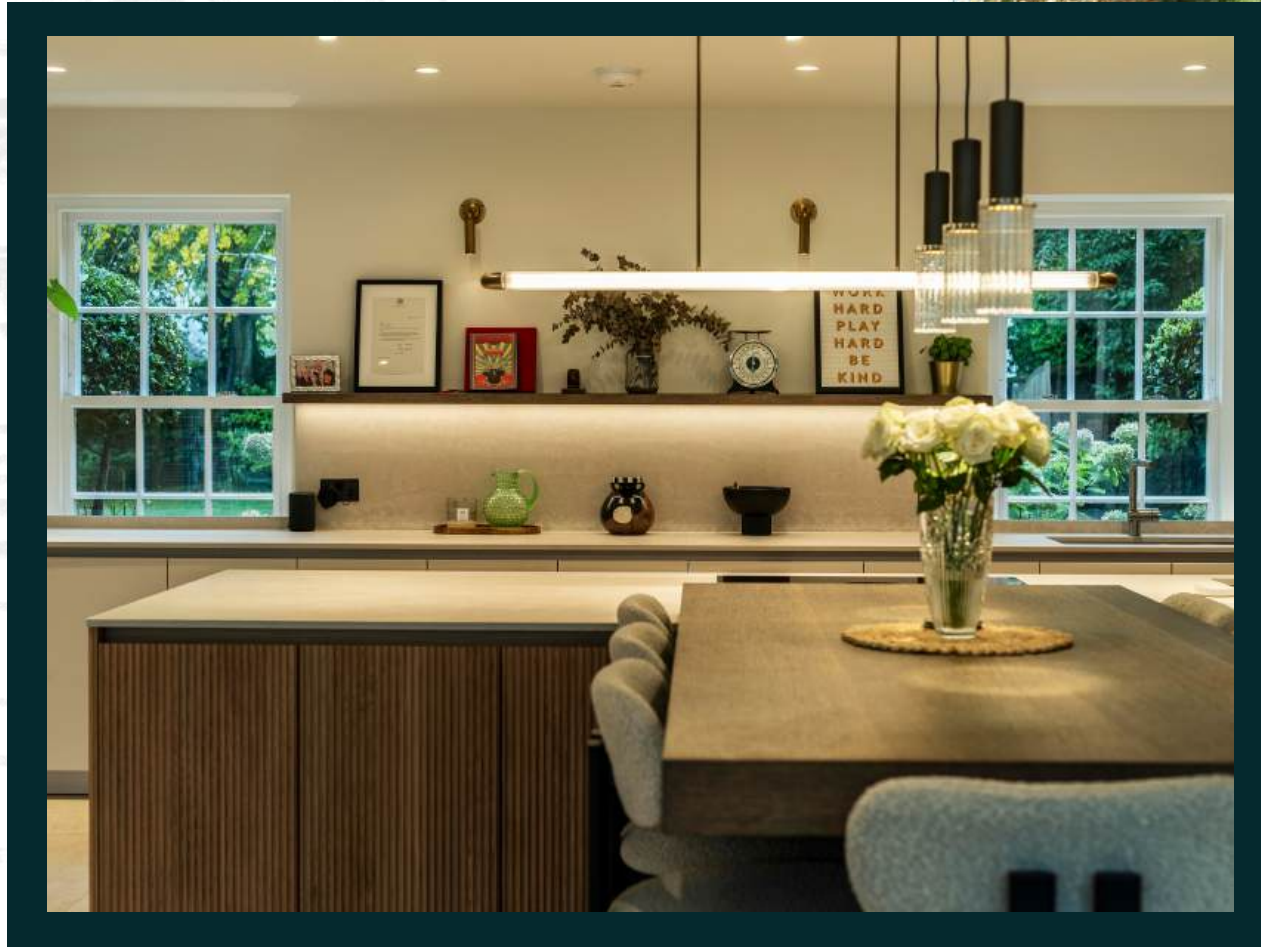
ABOUT THIS HOUSE



Tucked discreetly behind its wooden gates on one of Beaconsfield's most prestigious roads, Adare is a statement of contemporary country living, where architectural precision meets absolute comfort. Approached from a resin driveway and set within just under an acre of beautifully landscaped gardens, the house combines light, space and modern design to remarkable effect. Across three elegant floors, every room has been shaped for both family life and entertaining in style. At its heart lies a magnificent open-plan kitchen, fitted with the finest appliances and centred around a temperature-controlled wine cellar revealed beneath a glazed floor.



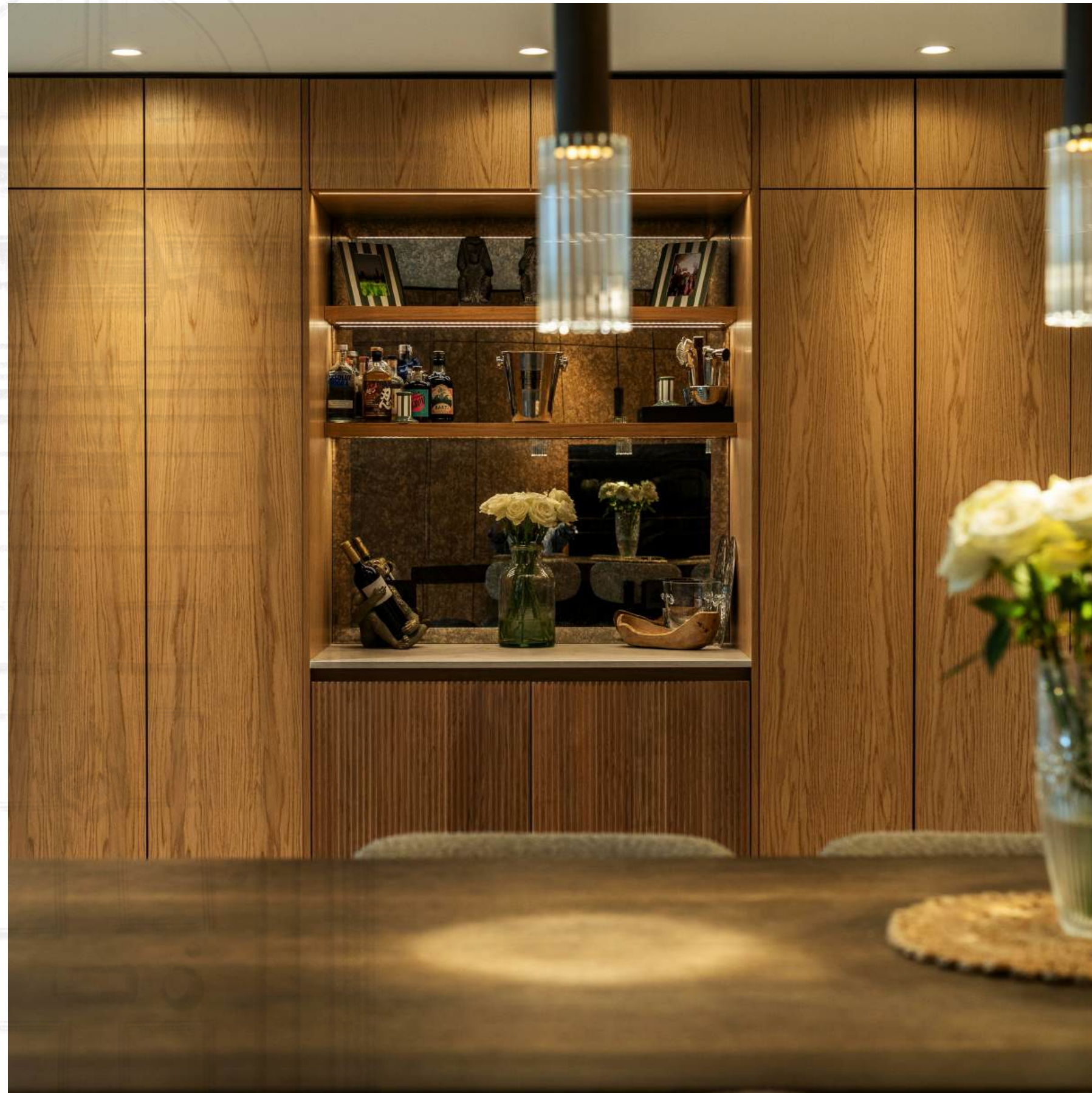
ABOUT THIS HOUSE



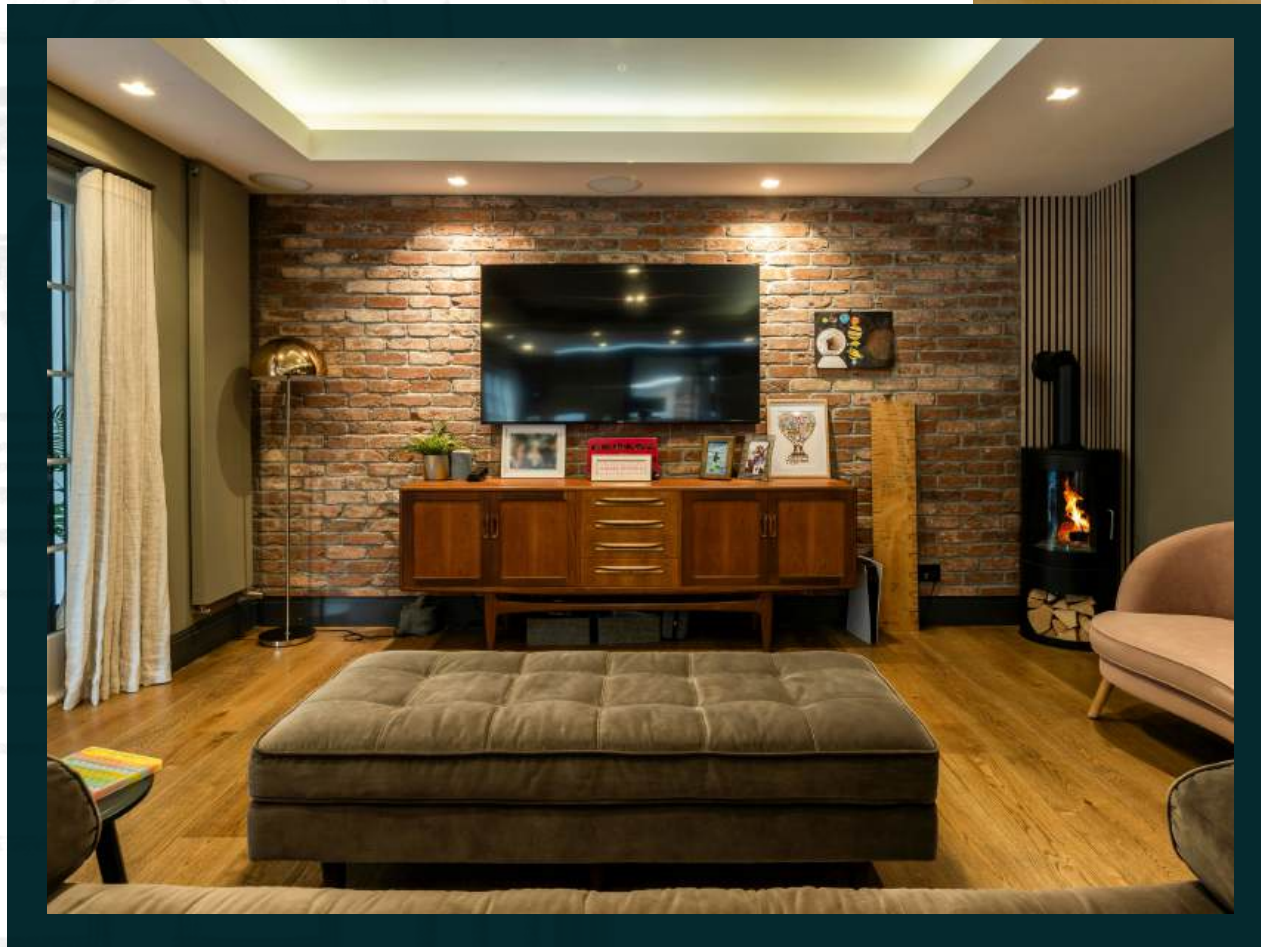
Sophisticated lighting, integrated systems and climate control ensure effortless living throughout the seasons. Beyond the kitchen, the house flows beautifully, from the cinema and games rooms to a library bar, private gym and an indulgent indoor swimming pool with adjoining shower and changing facilities. Outside, the gardens are perfectly composed for gatherings, complete with an outdoor kitchen, fire pit, irrigation system and tennis court. The principal suite, with its vast en suite and bespoke dressing room, captures the calm and craftsmanship that defines this exceptional home, a place where every element has been thoughtfully considered and finished to perfection.







THE FINER DETAILS

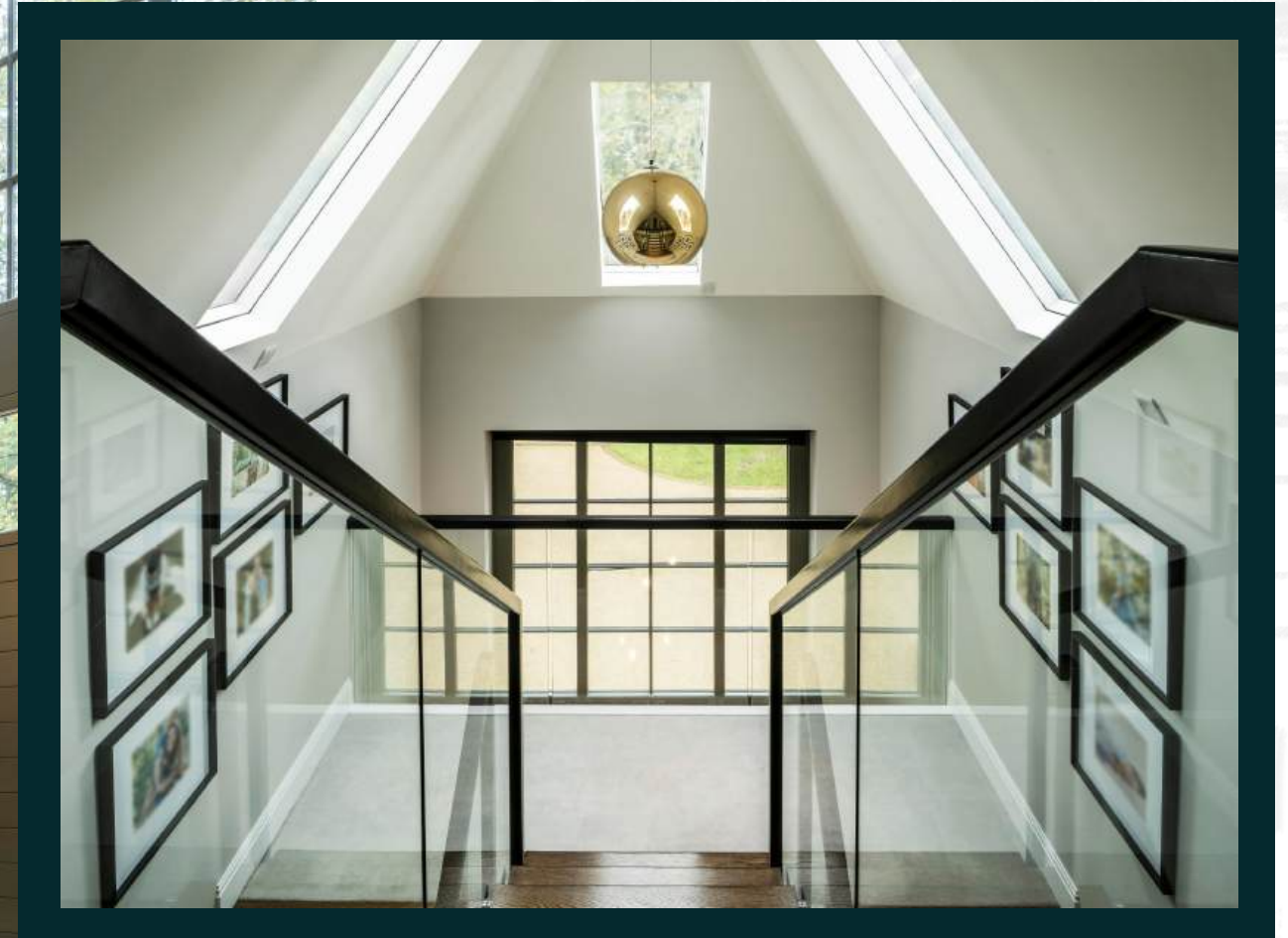


- 6 Bedrooms
- 5 Reception rooms
- 6 Bath/Shower rooms
- Four Car Garaging
- 0.98 Acre
- Indoor Swimming Pool
- Gym
- Annexe
- Tennis Court
- Cinema Room





THE FINER DETAILS



SERVICES
Mains gas, water, drainage and electricity

EPC
C
COUNCIL TAX
Band H

LOCAL AUTHORITY
Buckinghamshire Council



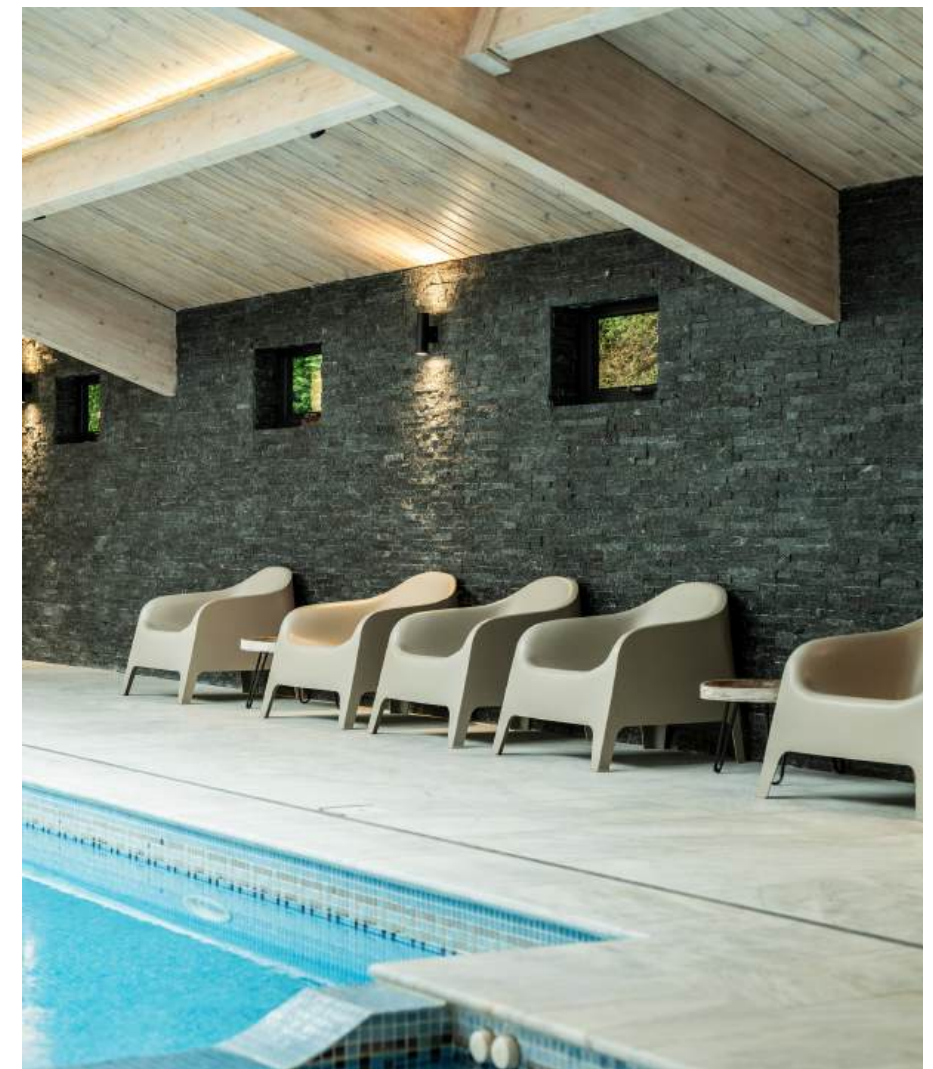












ABOUT THIS AREA

Beaconsfield is one of Buckinghamshire's most sought-after market towns, a place where elegant period streets meet vibrant modern living. Its historic Old Town, lined with coaching inns and independent

boutiques, offers a welcoming sense of community and a refined yet relaxed way of life. Just moments away, the New Town provides a superb range of everyday amenities, cafés and restaurants, along with fast rail links to London Marylebone in under thirty minutes. The surrounding countryside of the Chiltern Hills offers endless walking, cycling and riding routes, yet the M40 and M25 are both within easy reach, ensuring effortless access to the capital, Heathrow and beyond.

Education in the area is exceptional, with highly regarded grammar schools including Beaconsfield High and the Royal Grammar School, alongside notable independents such as Davenies, High March, The Beacon and Wycombe Abbey. Families are drawn here for this rare balance of convenience, beauty and connection, a town that feels both worldly and warmly local. Whether browsing the weekly market, dining in one of its acclaimed restaurants or exploring nearby woodlands, Beaconsfield embodies the best of contemporary country living within easy reach of London.

TOWNS & TRAIN STATIONS

Beaconsfield Station 1 mile
Chalfont St Giles 4 miles
Marlow 7 miles
London Heathrow 14 miles
London Marylebone from 26 minutes

LOCAL

The Royal Standard of England, Beaconsfield
Prime, Beaconsfield
The Greyhound, Beaconsfield

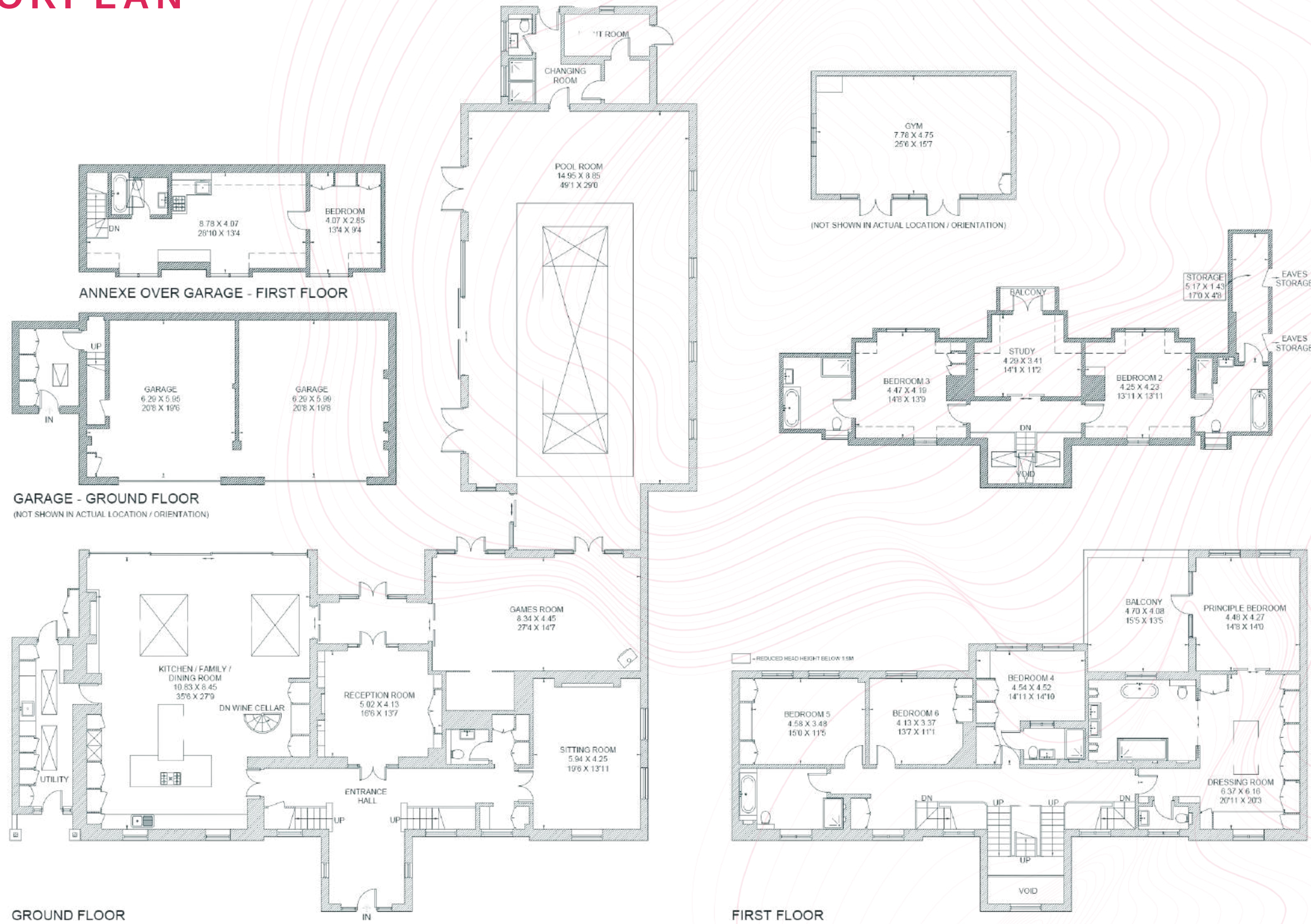








FLOORPLAN



Total - 847.7 sq m / 9124 sq ft

House - 680 sq m / 7319 sq ft | Outbuildings - 167.7 sq m / 1805 sq ft

IMPORTANT NOTICE: The Country House Department gives notice that: 1. These particulars do not constitute an offer or contract or part thereof. 2. All descriptions, photographs and plans are for guidance only and should not be relied upon as statements or representations of fact. All measurements are approximate and not necessarily to scale. Any prospective purchaser must satisfy themselves of the correctness of the information within the particulars by inspection or otherwise. 3. The Country House Department does not have any authority to give any representations or warranties whatsoever in relation to this property (including but not limited to planning/building regulations), nor can it enter into any contract on behalf of the Vendor. 4. The Country House Department does not accept responsibility for any expenses incurred by prospective purchasers in inspecting properties which have been sold, let or withdrawn. 5. The property will be sold subject to and with the benefit of all wayleaves, covenants, easements and rights of way, whether mentioned in these particulars or not. Photographs taken October 2025. Particulars prepared in October 2025.

AREA GUIDE

Buckinghamshire

With its chocolate box villages, historic towns, quality attractions and stunning countryside along with its cosy pubs, Buckinghamshire is formed partly by Chiltern landscapes that inspired literary residents and has a rich sporting heritage. There are lots of things to do in Buckinghamshire. Walk in Roald Dahl's footsteps through medieval villages to historic coaching inns. Or nose in drawing rooms in Italianate mansions, the backdrop for scandals like the Profumo Affair. This colourful southeast county has a high-octane side. Formula One cars rev on Grand Prix circuits and crews of rowers paddle on Olympic rowing lakes. Buckinghamshire has something for everyone.

WALKING **The Chiltern Way**
The Chiltern Way is a route of 134 miles through Bedfordshire, Buckinghamshire, Hertfordshire & Oxfordshire and offers breath taking views of the rolling landscape.

EATING OUT **The Greyhound**
Set within a lovingly restored former coaching inn, this restaurant blends thoughtful design, local craftsmanship and confident cooking, shaped by experience and driven by an ambition to be truly exceptional.

EVENT **The British Grand Prix**
Home of the British Grand Prix, the Silverstone circuit straddles the Northamptonshire / Buckinghamshire boarder.

DAY OUT **Cliveden House**
Cliveden House is a grand Italianate mansion overlooking the Thames, renowned for its gardens, layered history and enduring reputation as one of Britain's most celebrated luxury hotels.





THE
COUNTRY
HOUSE
DEPT.



03332 340 901
info@thecountryhousedepartment.com
thecountryhousedepartment.com