

# HOLLYBANK

*Magazine* 



THE  
COUNTRY  
HOUSE  
DEPT.





# HOLLYBANK

Shire Lane, Chorleywood, Rickmansworth, Hertfordshire, WD3 5NT



Discreetly positioned behind electric gates in the heart of Chorleywood, Hollybank is an exceptional Grade II listed Arts and Crafts house by the renowned architect C F A Voysey, set within beautifully landscaped gardens of about 0.62 acres.

Rich in original architectural detail, the house has been sensitively refurbished to create generous, light-filled family accommodation that feels both elegant and welcoming. Period fireplaces, mullioned windows and Voysey's distinctive craftsmanship sit comfortably alongside a vaulted kitchen, refined bedrooms and contemporary bathrooms.

Outside, the gardens have been thoughtfully designed by Cool Gardens and planted for year-round colour and structure, providing a calm and established setting. A beautifully conceived indoor pool house sits within the grounds, ideal for everyday use and informal entertaining, while a separate garden gym, yoga studio or family den is tucked to the rear, enjoying open views across the garden and offering valuable additional space away from the main house.







# THE FINER *Details*

**Bedrooms**

6

**Reception Rooms**

5

**Bath/Shower Rooms**

4

**Double Garage, 2 Outbuildings, Home Gym, Indoor Pool**

**Acreage**

0.62

**What3Words**

///middle.native.driver

**Co-Ordinates**

51°39'01"N , 000°31'44"W

**Services**

Mains gas, electricity, water and drainage

**EPC**

D

**Council Tax**

Band H

**Local Authority**

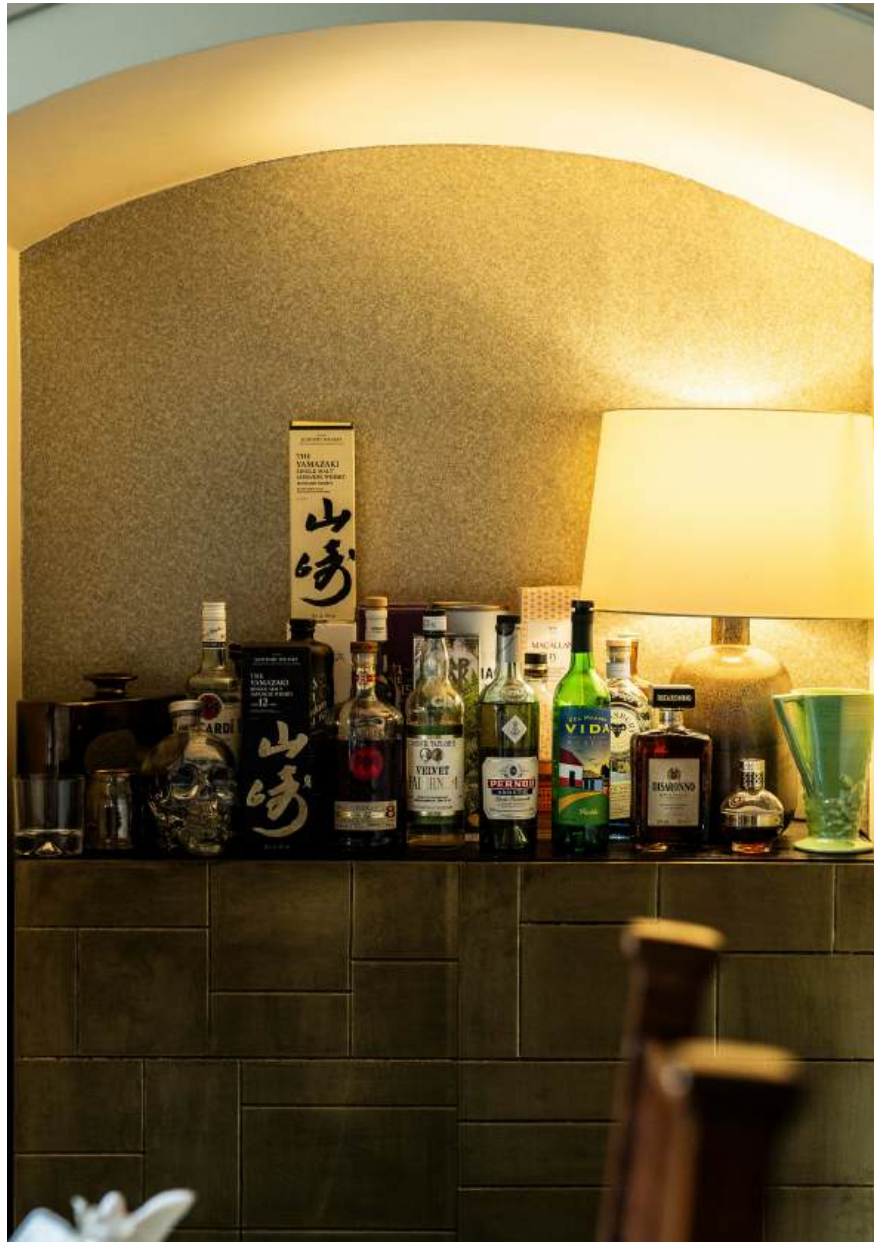
Hertfordshire County Council













# ABOUT *This Area*



Nestled in the heart of the Chilterns, Chorleywood is a sought-after village renowned for its blend of countryside charm and commuter convenience.

The area is celebrated for its excellent schooling, with a range of highly regarded state and independent schools catering to all ages, making it particularly popular with families.

For those working in the capital, Chorleywood offers swift and direct connections to London via the Metropolitan Line and Chiltern Railways, with journey times to Marylebone in around 35–40 minutes, providing the perfect balance of rural calm and city access.

Beyond its practical appeal, Chorleywood delights with a vibrant local scene. Independent boutiques, artisan shops, and a selection of cafes and delicatessens offer a welcoming, village atmosphere, while the nearby towns of Rickmansworth and Watford provide further retail and leisure options.

Dining is varied and enjoyable, from cosy gastro pubs to refined restaurants serving contemporary and traditional cuisine.

The village is also surrounded by open green spaces, including the renowned Chorleywood Common, perfect for walking, cycling, and family outings.

With its combination of excellent amenities, transport links, and quintessential English village charm, Chorleywood remains one of the Chilterns' most desirable addresses.





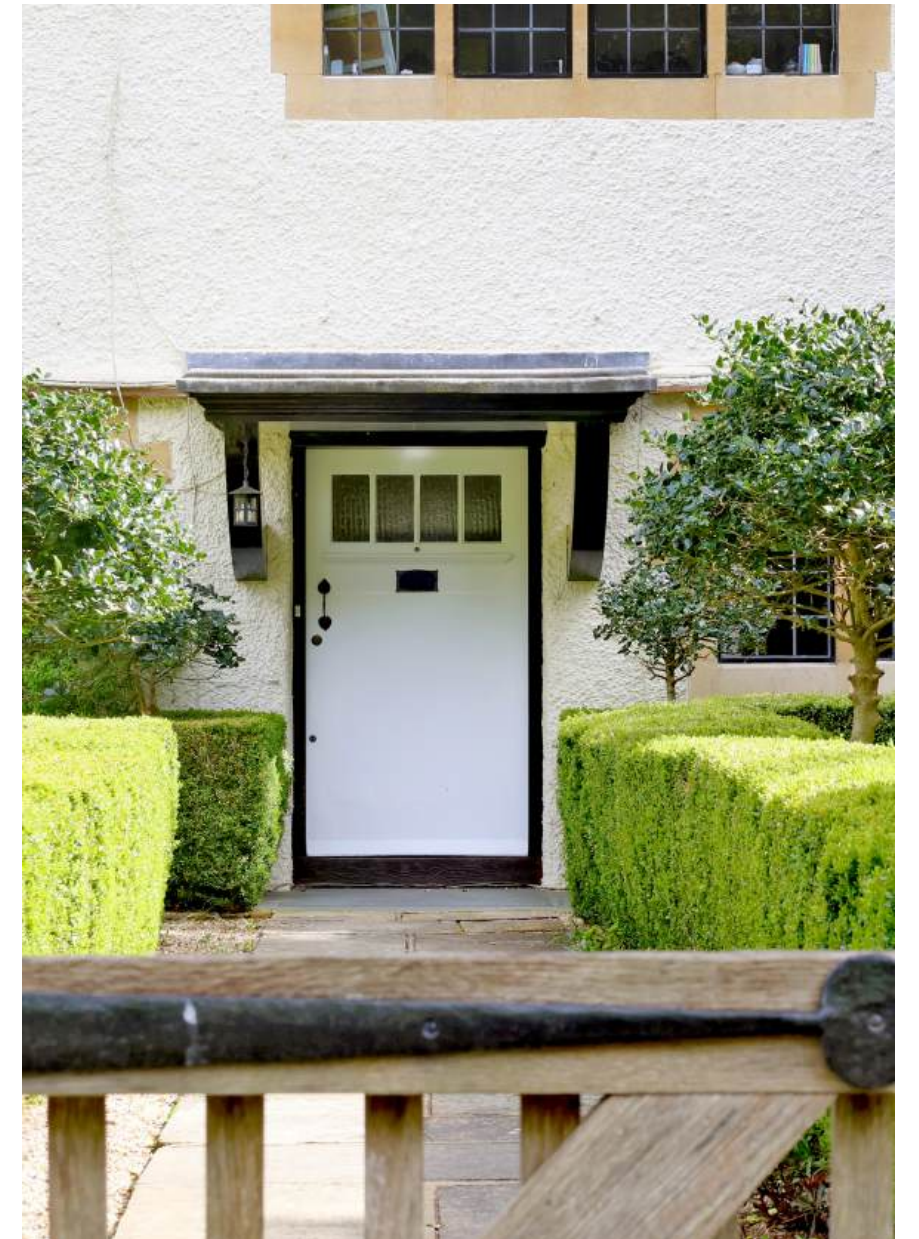














# POINTS OF *Interest*



## **Towns and Cities**

Rickmansworth 3.4 miles  
Amersham 5.7 miles  
Chalfont St. Peter 5.1 miles  
Chalfont St. Giles 6.5 miles  
Watford 7.7 miles  
Beaconsfield 12.7 miles  
London 26.4 miles

## **Pubs & Restaurants**

The Black Horse, Chorleywood  
The Jolly Cricketers, Seer Green  
Artichoke, Amersham

## **Train Stations**

Chorleywood 1 mile  
Chalfont & Latimer Station 1.9 miles  
Rickmansworth Station 2.4 miles

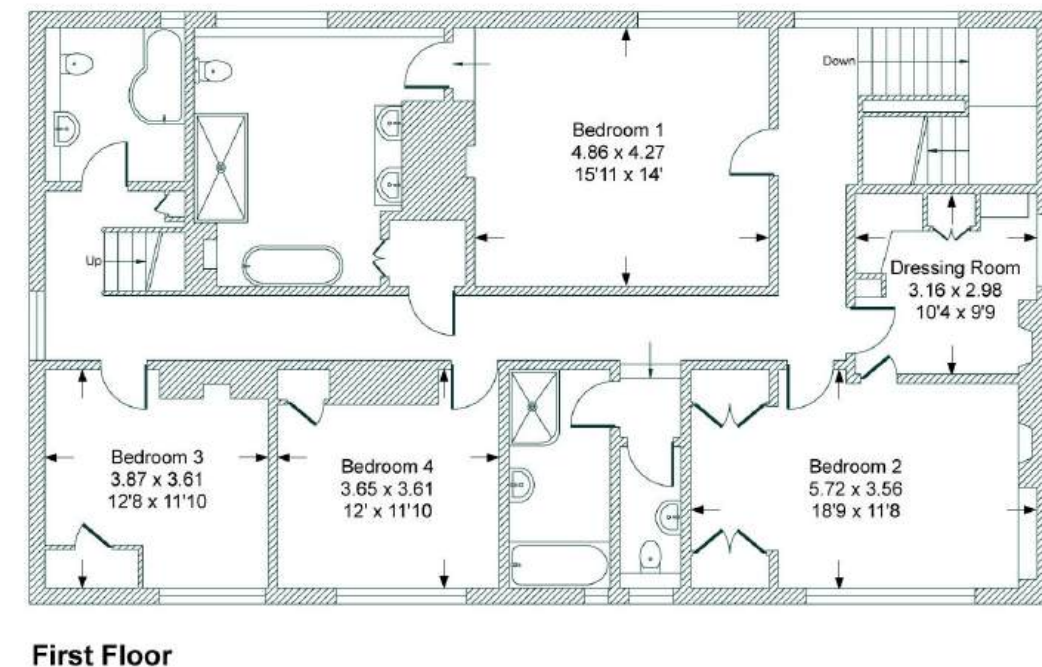
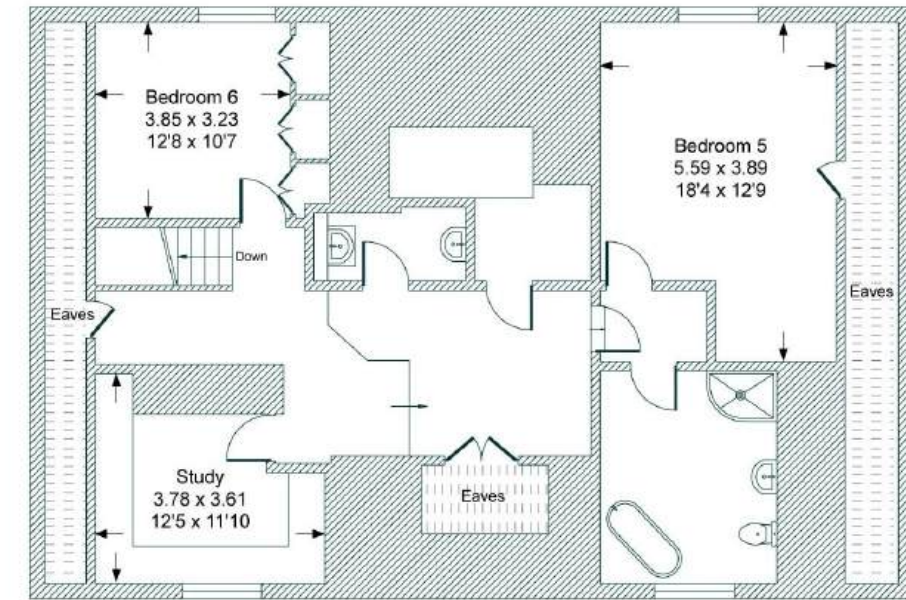
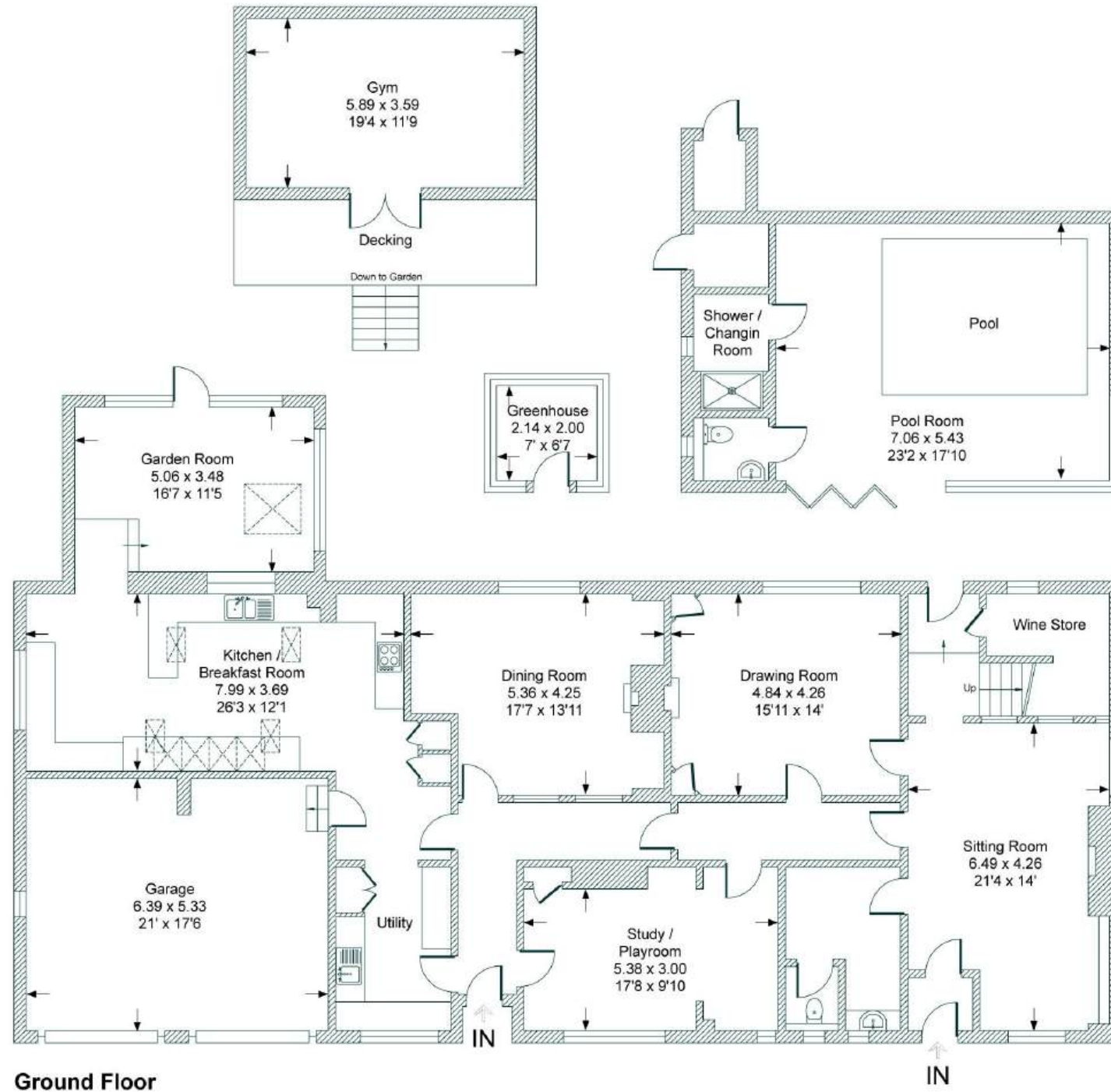
## **Airports**

London Heathrow 16.3  
Luton 22.7 miles  
Gatwick 50.7 miles



# FLOORPLANS

## *Hollybank*



Total - 585.2 sq m / 6,301 sq ft  
 House - 476.1 sq m / 5,125 sq ft | Garage - 34 sq m / 367 sq ft | Outbuildings - 75.1 sq m / 809 sq ft

IMPORTANT NOTICE: The Country House Department gives notice that: 1. These particulars do not constitute an offer or contract or part thereof. 2. All descriptions, photographs and plans are for guidance only and should not be relied upon as statements or representations of fact. All measurements are approximate and not necessarily to scale. Any prospective purchaser must satisfy themselves of the correctness of the information within the particulars by inspection or otherwise. 3. The Country House Department does not have any authority to give any representations or warranties whatsoever in relation to this property (including but not limited to planning/building regulations), nor can it enter into any contract on behalf of the Vendor. 4. The Country House Department does not accept responsibility for any expenses incurred by prospective purchasers in inspecting properties which have been sold, let or withdrawn. 5. The property will be sold subject to and with the benefit of all wayleaves, covenants, easements and rights of way, whether mentioned in these particulars or not. Photographs taken Feb 2026. Particulars prepared in Feb 2026.

# AREA GUIDE

## *Hertfordshire*

From the leafy commuter belt that skirts London to the rolling chalk of the Chilterns, Hertfordshire is a county of quiet confidence and handsome contrasts. Grand estates and impeccably kept market towns sit within easy reach of the capital, yet the pace of life remains reassuringly rural. St Albans lends Roman gravitas and cathedral grandeur, Berkhamsted and Hitchin provide historic high streets with excellent independent shops, and the lanes between Harpenden and Tring are studded with villages that seem designed for long lunches and longer walks. Food lovers are well served, too, with a clutch of refined country house hotels and destination dining rooms - most notably the Michelin-starred Auberge du Lac at Brocket Hall and The Farmhouse at Redcoats - while golfers, riders and ramblers find ample excuses to linger outdoors.

### **Walking – Ashridge Estate**

On the Hertfordshire/Buckinghamshire border, the National Trust's Ashridge Estate offers miles of beech woods, chalk downs and far-reaching views across the Chilterns. It's spectacular in autumn, but a pleasure in any season, with well-marked trails and the promise of a good tearoom at the end.

### **Eating Out – Auberge du Lac, Brocket Hall**

Set within the grounds of a Palladian country house, this Michelin-starred restaurant pairs classical technique with modern finesse, all served in a serene lakeside setting that feels made for lingering, celebratory lunches.

### **Event – Knebworth Park Concerts**

A byword for great British live music, Knebworth's summer calendar continues to draw world-class acts, bringing a touch of glamour to one of the county's most storied estates.

### **Day Out – Hatfield House**

An architectural tour de force and the childhood home of Elizabeth I, Hatfield House combines a magnificent Jacobean mansion with formal gardens and sweeping parkland—an effortlessly elegant way to spend an afternoon.





THE  
COUNTRY  
HOUSE  
DEPT.



03332 340 901  
[info@thecountryhousedepartment.com](mailto:info@thecountryhousedepartment.com)  
[thecountryhousedepartment.com](http://thecountryhousedepartment.com)