

19
MAYS
FIELD
Magazine 



THE
COUNTRY
HOUSE
DEPT.



19 *Mays Field*

Thame, OX9 2GA



Set within seven acres of parkland, The Crescent, is an exclusive collection of boutique homes set around a Grade II listed landscape with elegant, Georgian-inspired curved façades. Despite its wonderfully quiet and secluded position, it sits just a two-minute walk from Thame's vibrant High Street, with its independent shops, restaurants and pubs, offering an ideal blend of tranquillity and everyday convenience. Designed with impressive energy efficiency, the house provides comfortable, low-impact living without compromising on style.

This three-storey villa offers beautifully considered accommodation throughout. A striking glass walkway leads into a dramatic double-height atrium, which opens into an expansive open-plan kitchen, dining and living space featuring bespoke cabinetry, a central island and premium integrated appliances. A separate family room, powder room and private garden complete the ground floor, creating a flexible layout for both entertaining and day-to-day living.

The first floor hosts a formal reception room with a full-width balcony overlooking the parkland. Across the upper levels are five bedrooms, including a luxurious principal suite with dressing room, en suite bathroom and its own balcony. A self-contained studio above the garage provides ideal accommodation for guests, staff or multi-generational living.

Interiors are finished with Italian porcelain, bespoke joinery and a calm, neutral palette, with a lift serving all floors for ease and accessibility.







PLEASE NOTE: *This image has been virtually staged to illustrate potential room layout.*

THE FINER *Details*

Bedrooms
5

Reception Rooms
2

Bath/Shower Rooms
4

Double Garage
1

What3Words
[///pitching.daredevil.mutual](https://pitching.daredevil.mutual)

Co-Ordinates
51°44'39"N , 000°58'31"W

Services
Mains water and drainage
Air Source Heat pump

EPC
B

Local Authority
South Oxfordshire District Council









PLEASE NOTE: *This image has been virtually staged to illustrate potential room layout.*





ABOUT THIS *Area*



Thame is a vibrant market town on the edge of the Chiltern Hills, offering an ideal blend of historic charm and modern convenience. The town radiates from its historic market square home to a weekly market, and is renowned for its independent shops, including traditional butchers, bakers and delicatessens, alongside a Waitrose and high-street favourites. A selection of cafés, restaurants and traditional pubs, together with a sports centre and excellent schools, all add to the town's appeal.

The surrounding countryside provides an abundance of recreational opportunities, with scenic walks and cycling routes such as the popular Phoenix Trail, as well as the Chiltern Hills Area of Outstanding Natural Beauty close by. The historic city of Oxford, with its world-famous university and cultural amenities, is around 35 minutes by car.

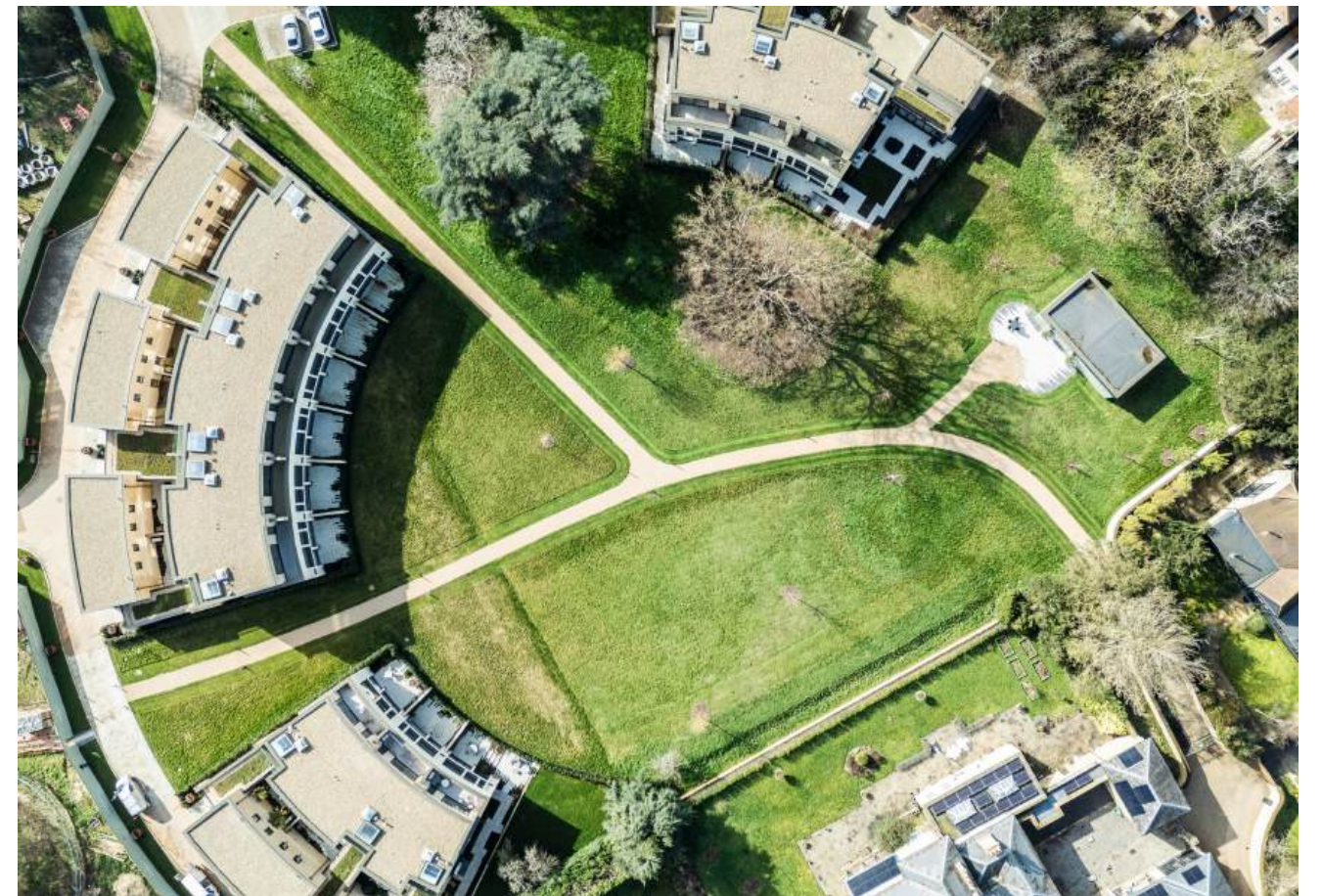
For commuters, Thame offers excellent transport connections, particularly to London. Haddenham & Thame Parkway Station lies less than three miles from the town centre and provides regular services to London Marylebone, with journey times from approximately 43 minutes, making it ideal for daily travel. The M40 is around an 11-minute drive, offering easy access to the capital by road



PLEASE NOTE: *This image has been virtually staged to illustrate potential room layout.*













POINTS OF *Interest*



Towns and Cities

Aylesbury 6 miles

Oxford 18 miles

Bicester 16.1 miles

London

Pubs & Restaurants

The Thatch, Thame

The Crown, Cuddington

Le Manoir aux Quat'Saisons, Great Milton

Train Stations

Haddenham and Thame Parkway 2.6 miles

London Marylebone from 43 mins

Airports

London Heathrow 36 miles



FLOORPLANS

19 Mays Field



Total - 370.8 sq m / 3,991 sq ft
 House - 284.2 sq m / 3,059 sq ft | Annexe - 84.6 sq m / 911 sq ft

IMPORTANT NOTICE: The Country House Department gives notice that: 1. These particulars do not constitute an offer or contract or part thereof. 2. All descriptions, photographs and plans are for guidance only and should not be relied upon as statements or representations of fact. All measurements are approximate and not necessarily to scale. Any prospective purchaser must satisfy themselves of the correctness of the information within the particulars by inspection or otherwise. 3. The Country House Department does not have any authority to give any representations or warranties whatsoever in relation to this property (including but not limited to planning/building regulations), nor can it enter into any contract on behalf of the Vendor. 4. The Country House Department does not accept responsibility for any expenses incurred by prospective purchasers in inspecting properties which have been sold, let or withdrawn. 5. The property will be sold subject to and with the benefit of all wayleaves, covenants, easements and rights of way, whether mentioned in these particulars or not. Photographs taken March 2026. Particulars prepared in March 2026.

AREA GUIDE

Oxfordshire 🍷

From the Riverside glamour of Henley in the South to Banbury's glorious golden sandstone in the North, Oxfordshire is a classic English county which defies simple definitions. With much of the county easily commutable to London, there are hundreds of picture-perfect country villages to choose from. You never have to look far for a good pub and the county also lays claim to some of the country's finest restaurants and retreats, including Raymond Blanc's two Michelin starred Le Manoir aux Quat'Saisons and the renowned Soho Farmhouse. Lovers of the outdoors are spoilt for choice with the walks along the Thames Path which winds its way through the heart of the county and also the The Ridgeway, an iconic national trail.

Walking - Wittenham Clumps

Wittenham Clumps is the common name for a pair of wooded chalk hills in the Thames Valley with an extensive network of paths.

Eating Out - Le Manoir aux Quat'Saisons

Described as "a twist of imaginative genius", Raymond Blanc's vision for Le Manoir aux Quat'Saisons has always been one of world-class gastronomic flair and outstanding organic produce.

Event - Henley Royal Regatta

A prestigious rowing event held annually on the River Thames. Races are head-to-head knock out competitions, raced over five days in July.

Day Out - Blenheim Palace

A monumental country palace in Woodstock. The palace, one of England's largest houses, was built between 1705 and 1722, and designated a UNESCO World Heritage Site in 1987.





THE
COUNTRY
HOUSE
DEPT.



03332 340 901
info@thecountryhousedepartment.com
thecountryhousedepartment.com