

# SEATON

Magazine 



THE  
COUNTRY  
HOUSE  
DEPT.





# SEATON

## *14 Beaumont Rise*

Marlow, Buckinghamshire, SL7 1EB



In the very heart of Marlow, Seaton is a wonderfully appointed town-centre home, comprehensively refurbished and extended by the current owner with exacting care. Architect designed and project managed by Maxwell and Co and delivered by Build 9, it balances craftsmanship with quiet innovation. Two reception spaces anchor the ground floor: a refined living room with a Stûv fire, and a bespoke snug, both complementing an open-plan kitchen and dining room that looks across landscaped gardens to the studio by James Gray Bespoke Garden Rooms. A breakfast corner and utility complete the scene. The first floor is devoted entirely to a serene principal suite with dressing room and luxurious en suite, while two further bedrooms share a beautifully finished bathroom above.







# THE FINER *Details*

**Bedrooms**  
3

**Reception Rooms**  
3

**Bath/Shower Rooms**  
2

**Gym**

**Cellar**

**What3Words**  
///tactical.dazzling.compelled

**Co-Ordinates**  
51°34'18"N , 000°46'17"W

**Services**  
Mains water, drainage, and electric  
Gas fired central heating

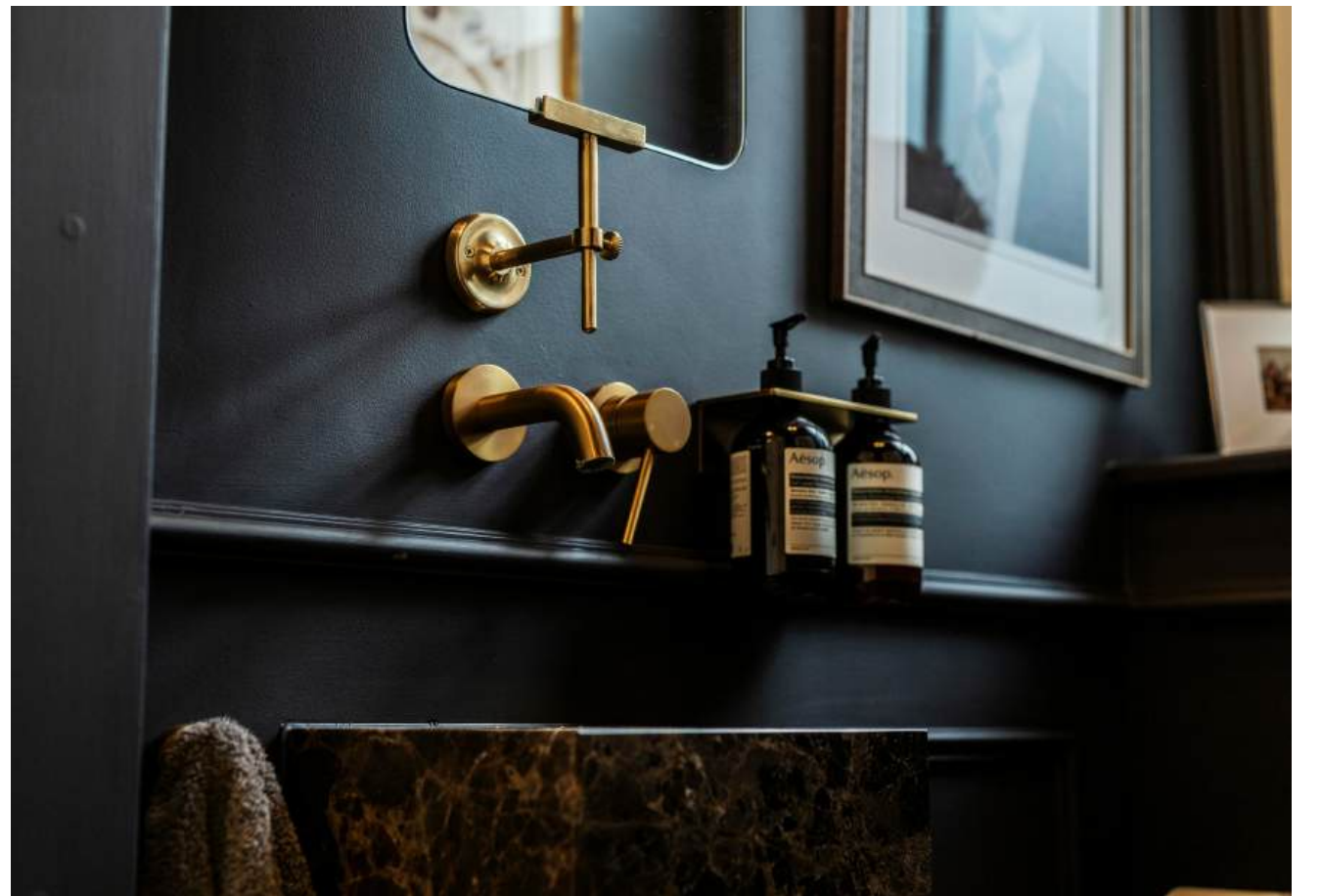
**EPC**  
C

**Council Tax**  
Band G

**Local Authority**  
Buckinghamshire County Council











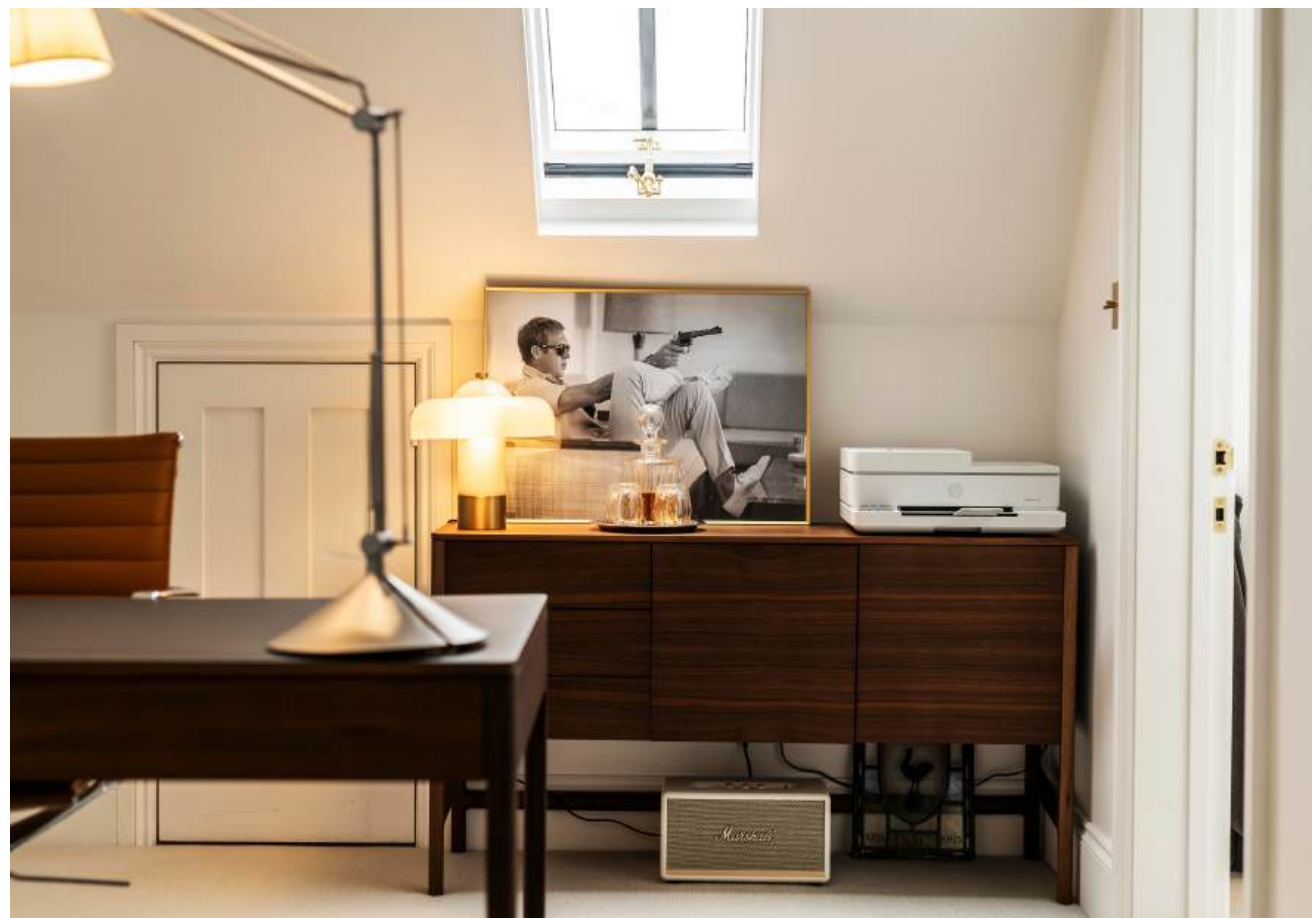


## ABOUT THIS *Area*



Marlow is one of Buckinghamshire's most sought-after riverside towns, perfectly balancing community spirit with refined living. Set along a picturesque stretch of the Thames, it offers a vibrant High Street lined with independent shops, cafés and acclaimed restaurants, including those along the riverfront where life naturally slows to the rhythm of the water. The town hosts a lively calendar of events, from the Marlow Regatta to food and music festivals that draw visitors year after year. Excellent schools and strong transport connections add to its appeal, with the A404 giving swift access to both the M4 and M40, and trains to London via Maidenhead. Marlow's blend of charm, convenience and culture makes it a truly special place to call home.













# POINTS OF *Interest*



## **Towns and Cities**

Henley, 9 miles  
Windsor, 14 miles  
Ascot, 17 miles  
London 34 miles

## **Pubs & Restaurants**

The Coach, Marlow  
The Oarsman, Marlow  
The Ivy, Marlow

## **Train Stations**

Marlow Station, 0.25 mile  
Cookham Station, 4 miles  
Maidenhead Station, 8 miles  
London Paddington from 20 minutes (from Maidenhead)

## **Airports**

London Heathrow 24 miles  
Luton Airport 42 miles  
Gatwick Airport 60 miles



# FLOORPLANS

## *Seaton*



Total - 255.1 sq m / 2,608 sq ft  
 House - 218.5 sq m / 2353 sq ft | Outbuilding- 36.6 sq m / 255 sq ft |

# AREA GUIDE

## *Buckinghamshire* ➡

With its chocolate box villages, historic towns, quality attractions and stunning countryside along with its cosy pubs, Buckinghamshire is formed partly by Chiltern landscapes that inspired literary residents and has a rich sporting heritage. There are lots of things to do in Buckinghamshire. Walk in Roald Dahl's footsteps through medieval villages to historic coaching inns. Or nose in drawing rooms in Italianate mansions, the backdrop for scandals like the Profumo Affair. This colourful southeast county has a high-octane side. Formula One cars rev on Grand Prix circuits and crews of rowers paddle on Olympic rowing lakes. Buckinghamshire has something for everyone.

### **Walking - The Chiltern Way**

The Chiltern Way is a route of 134 miles through Bedfordshire, Buckinghamshire, Hertfordshire & Oxfordshire and offers breath taking views of the rolling landscape.

### **Eating Out - The Mash Inn, Bennett End**

A restaurant with rooms located in the hamlet of Bennett End. The small restaurant features an open kitchen where they cook simply but skillfully over a bespoke wood-fired grill.

### **Event - The British Grand Prix**

Home of the British Grand Prix, the Silverstone circuit straddles the Northamptonshire / Buckinghamshire boarder.

### **Day Out - Waddesdon Manor**

Built by Baron Ferdinand de Rothschild to exhibit his collections of art treasures. The Victorian garden is considered one of the finest in Britain.



# ABOUT *The Country House Department*



Established in June 2020, The Country House Department specialises exclusively in the sale of exceptional country houses. With a team of 20 dedicated professionals, we are renowned for delivering outstanding client service, innovative marketing strategies and an unrivalled understanding of the rural property market.

Each of our regions is covered by a highly experienced agent who possesses in-depth, local knowledge and a proven track record of selling premium properties in their area. This regional expertise ensures that every home is marketed with insight, precision and a genuine understanding of its unique appeal. Importantly, every property benefits from a single, dedicated point of contact, providing continuity, clarity and the very highest level of personal service throughout the entire sales process.

Prioritising quality over quantity, we focus on representing only the finest houses. As a result, we are fast becoming the trusted agent for premium properties across 15 counties, including Gloucestershire, Oxfordshire, Wiltshire, Berkshire, Buckinghamshire, Surrey, Hampshire, Northamptonshire, Worcestershire, Warwickshire, Somerset, Essex, Cambridgeshire, Suffolk and West Sussex.

← *Sold by The Country House Department*



THE  
COUNTRY  
HOUSE  
DEPT.



03332 340 901  
[info@thecountryhousedepartment.com](mailto:info@thecountryhousedepartment.com)  
[thecountryhousedepartment.com](http://thecountryhousedepartment.com)