


KEEPERS

BARN

Magazine 



THE
COUNTRY
HOUSE
DEPT.





KEEPERS *Barn*

Lenborough, Buckinghamshire. MK18 4BS



Located in a private rural setting at the end of a long drive and behind electric gates, Keepers Barn is a superb modern barn conversion. Originally converted in 1997, it has been extensively enhanced by the current owners to create a truly exceptional home.

Positioned between the villages of Lenborough and Gawcott, the property enjoys far-reaching views across the rolling North Buckinghamshire countryside. Expansive glazed sections frame these views beautifully, flooding the interiors with natural light.

Perfectly placed for commuting, there are convenient rail connections to London from nearby Milton Keynes, Bicester and Winslow.

Throughout, Keepers Barn has been finished with a confident sense of style, with interiors that are both striking and thoughtfully designed.







THE FINER *Details*

Bedrooms
6/7

Reception Rooms
4

Bath/Shower Rooms
4

Outside Office
1

Gym
1

Stables
2

Swimming pool
1

Acreage
1.3

What3Words
///rubble.fizzled.microchip

Co-Ordinates
51° 97' 77.93" N - 0° 99' 29.1" W

Services
Mains water and electricity
Private drainage
Oil fired central heating

EPC
Band E

Council Tax
Band H

Local Authority
Aylesbury Vale













ABOUT THIS *Area*



Set between the hamlet of Lenborough and the picturesque village of Gawcott, the property enjoys an unspoilt and tranquil spot in the north Buckinghamshire countryside. Gawcott is home to the popular local pub, The Crown, and Chafor Vineyard. There are excellent recreational facilities nearby, including the Richard Roper playing field with an astro turf pitch, cricket and football clubs, and a large children's playground. The nearby county town of Buckingham provides a wide range of shops and amenities, including Waitrose.

The area is also well served by a number of prestigious private schools, including Winchester House, Beachborough and Swanbourne, and for older pupils, Stowe, Tudor Hall, Bloxham, Rugby and St Edward's in Oxford. The surrounding countryside is crisscrossed with public footpaths and bridleways, offering easy access to scenic walks. With stunning natural beauty and attractions such as Stowe Landscape Gardens and Silverstone Race Circuit close by, Keepers Barn offers an exceptional lifestyle that perfectly balances rural tranquillity, luxury design, and excellent connectivity to London and Birmingham via Milton Keynes, Bicester, or Winslow stations.





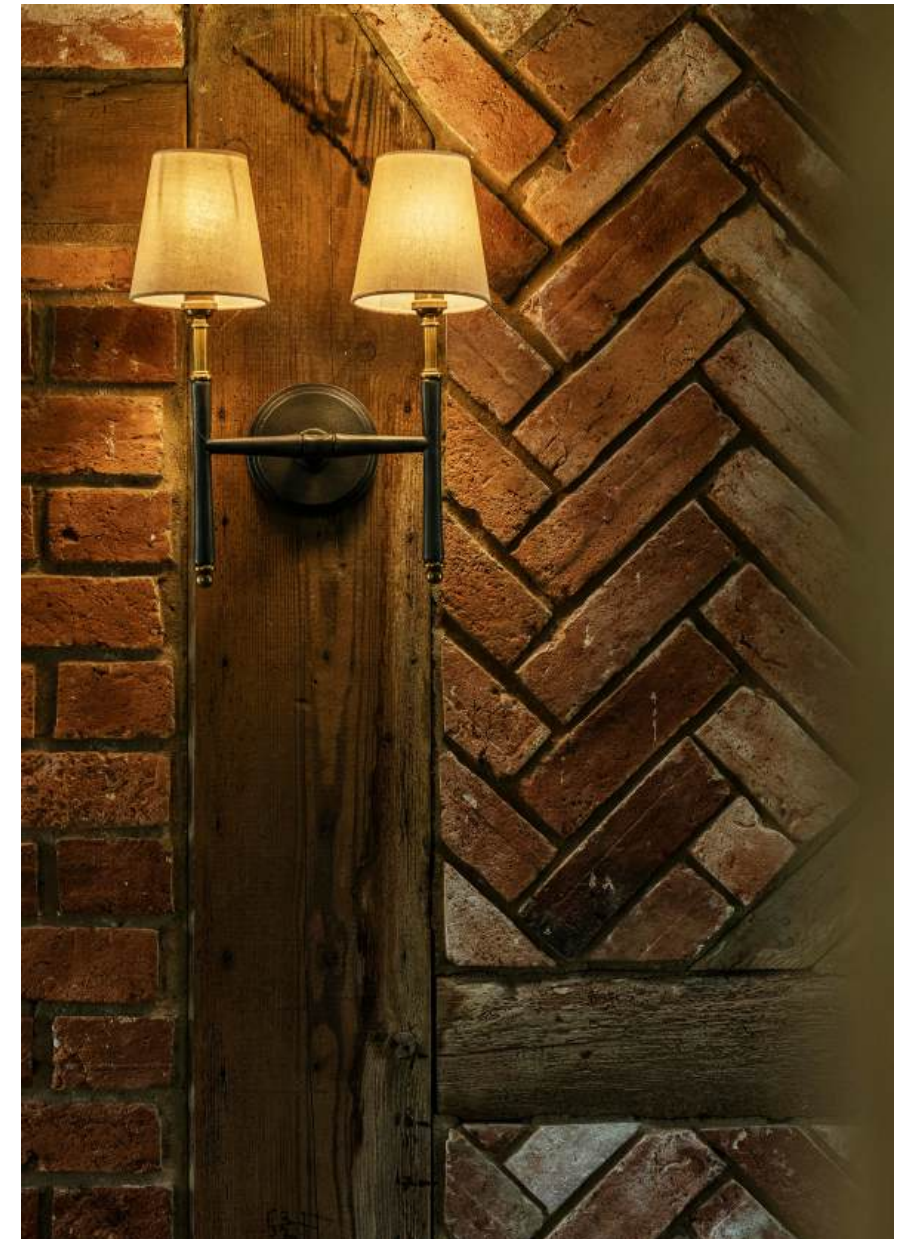
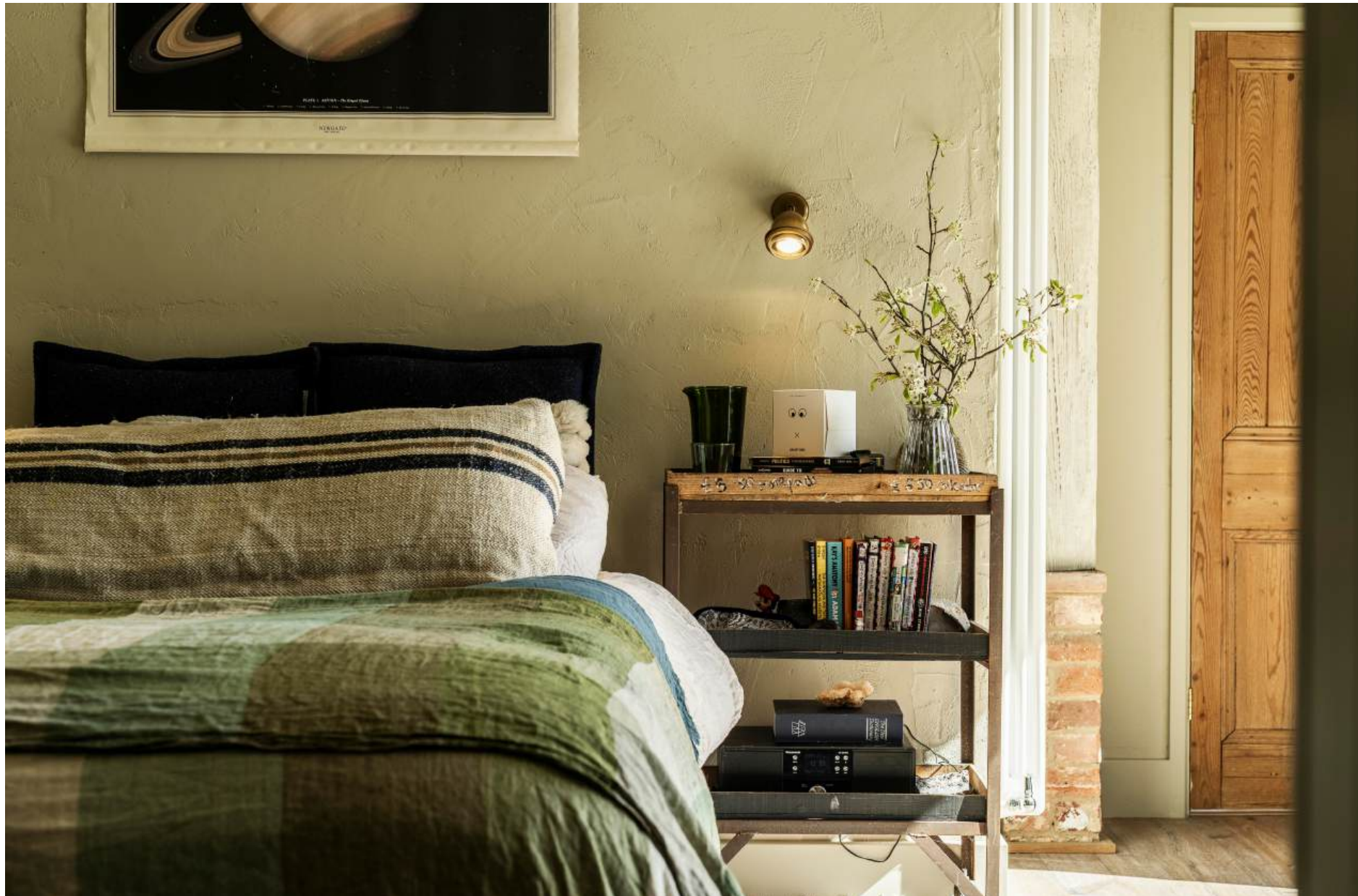
















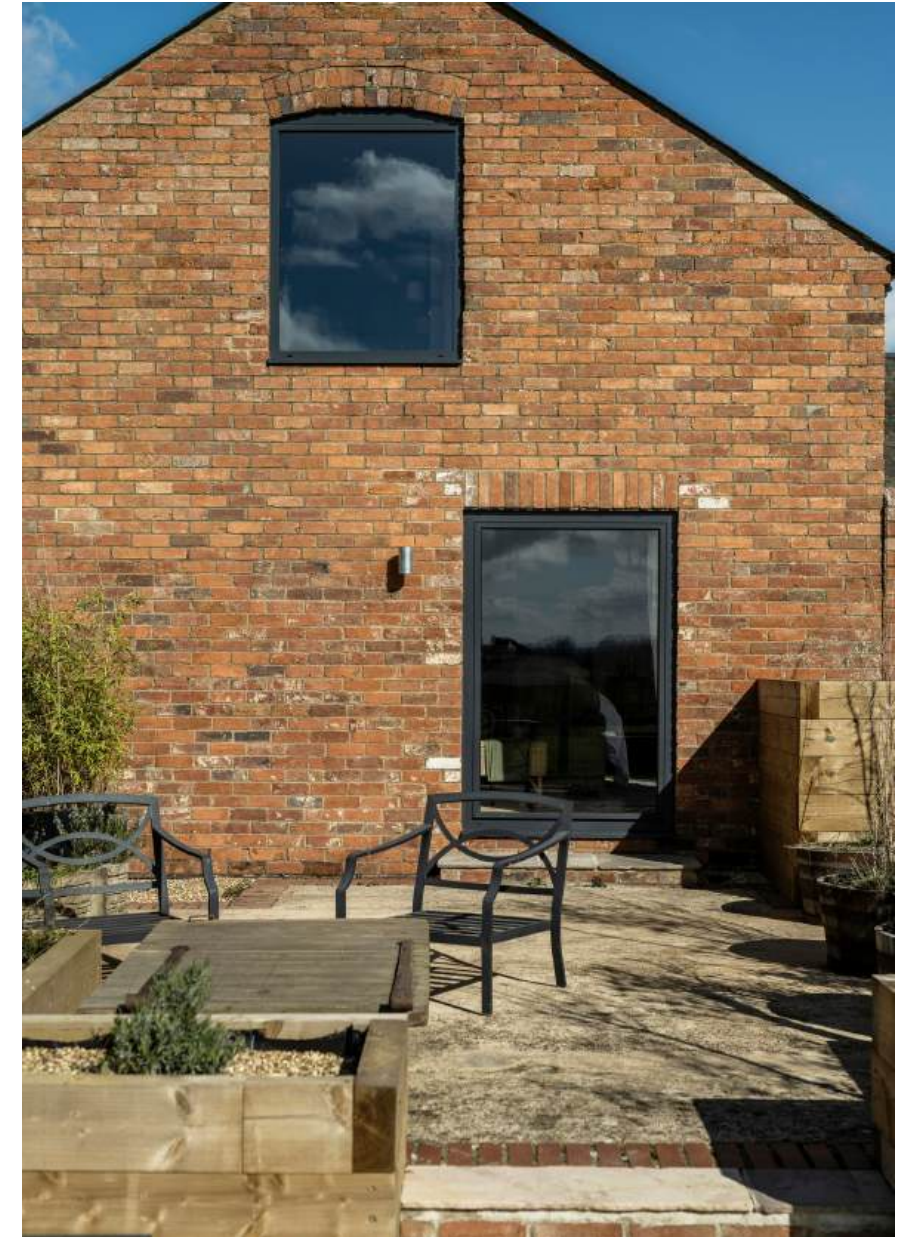














POINTS OF *Interest*



Towns and Cities

Buckingham 3 miles
Bicester 11.5 miles
Milton Keynes 15 miles
Oxford 30.3 miles
London 64.1 miles

Pubs & Restaurants

The Betsey Wynn, Swanbourne
The Grand Union, Buckingham
The Old Thatched Inn, Adstock
The Red Lion, Evenley

Train Stations

Milton Keynes Central Station 14.3 miles
(London Euston from 33 mins)
Bicester North Station 11.8 miles
(London Marylebone from 48 mins)
Winslow Station Station 6 miles (trains to Milton Keynes, Oxford and Bedford)

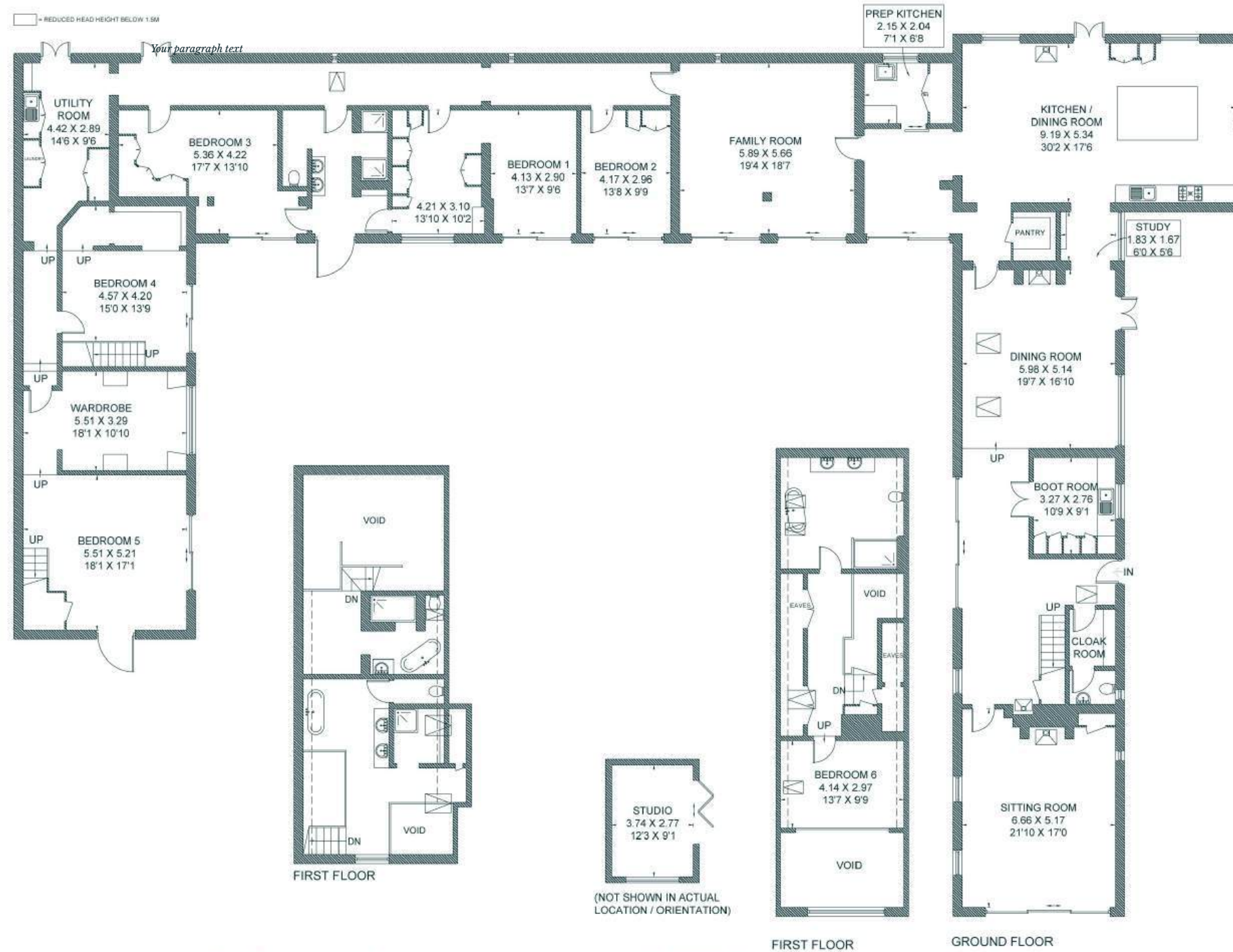
Airports

Luton airport 36.2 miles
London Heathrow 54.6 miles
Birmingham Airport 56 miles



FLOORPLANS

Keepers Barn



This floor plan has been drawn in accordance with RICS Property Measurement 2nd edition.

All measurements, including the floor area, are approximate and for illustrative purposes only. @fourwalls-group.com #105194

Total - 521.8 sq m / 5,617 sq ft
 House - 511.5 sq m / 5,506 sq ft | Studio - 10.3 sq m / 111 sq ft

AREA GUIDE

Buckinghamshire ➡

With its chocolate box villages, historic towns, quality attractions and stunning countryside along with its cosy pubs, Buckinghamshire is formed partly by Chiltern landscapes that inspired literary residents and has a rich sporting heritage. There are lots of things to do in Buckinghamshire. Walk in Roald Dahl's footsteps through medieval villages to historic coaching inns. Or nose in drawing rooms in Italianate mansions, the backdrop for scandals like the Profumo Affair. This colourful southeast county has a high-octane side. Formula One cars rev on Grand Prix circuits and crews of rowers paddle on Olympic rowing lakes. Buckinghamshire has something for everyone.

Walking - The Chiltern Way

The Chiltern Way is a route of 134 miles through Bedfordshire, Buckinghamshire, Hertfordshire & Oxfordshire and offers breath taking views of the rolling landscape.

Eating Out - The Mash Inn, Bennett End

A restaurant with rooms located in the hamlet of Bennett End. The small restaurant features an open kitchen where they cook simply but skillfully over a bespoke wood-fired grill.

Event - The British Grand Prix

Home of the British Grand Prix, the Silverstone circuit straddles the Northamptonshire / Buckinghamshire boarder.

Day Out - Waddesdon Manor

Built by Baron Ferdinand de Rothschild to exhibit his collections of art treasures. The Victorian garden is considered one of the finest in Britain.





THE
COUNTRY
HOUSE
DEPT.



03332 340 901
info@thecountryhousedepartment.com
thecountryhousedepartment.com

IMPORTANT NOTICE: The Country House Department gives notice that: 1. These particulars do not constitute an offer or contract or part thereof. 2. All descriptions, photographs and plans are for guidance only and should not be relied upon as statements or representations of fact. All measurements are approximate and not necessarily to scale. Any prospective purchaser must satisfy themselves of the correctness of the information within the particulars by inspection or otherwise. 3. The Country House Department does not have any authority to give any representations or warranties whatsoever in relation to this property (including but not limited to planning/building regulations), nor can it enter into any contract on behalf of the Vendor. 4. The Country House Department does not accept responsibility for any expenses incurred by prospective purchasers in inspecting properties which have been sold, let or withdrawn. 5. The property will be sold subject to and with the benefit of all wayleaves, covenants, easements and rights of way, whether mentioned in these particulars or not. Photographs taken March 2026 Particulars prepared in April 2026.