

NOWELL HOUSE

Magazine 



THE
COUNTRY
HOUSE
DEPT.







NOWELL *House*

School Road, Bisley, Gloucestershire, GL6 7BE



Nowell House is defined by its beautiful proportions, both inside and out. There is a natural harmony to its Queen Anne form, where balanced elevations give way to rooms that feel equally well judged — light-filled, and quietly elegant.

Outside, the garden completes the picture. Enclosed and thoughtfully landscaped, it offers pockets of quiet with spaces to sit as the day unfolds and there is a sense of privacy here, of being gently held within a landscape that feels both manageable and generous, within the heart of the village.

Nowell House is not a house that shouts for attention. It reveals itself slowly, rewarding those who appreciate detail, balance, and the enduring appeal of a home that has been shaped over time. While it calls for considered updating, it is precisely this combination of architectural integrity and potential that makes it so compelling—a beautiful house, ready for its next chapter.







THE FINER *Details*

Bedrooms

5

Reception Rooms

3

Bath/Shower Rooms

3

Double garage

What3Words

///usages.collides.denser

Co-Ordinates

51°45'10"N , 002°08'30"W

Services

Mains water, electricity, and drainage
Gas fired central heating

EPC

D

Council Tax

Band G

Local Authority

Stroud District Council











ABOUT THIS *Area*



Nowell House is located in the attractive village of Bisley, northwest of Cirencester, surrounded by some of the Cotswolds' most unspoilt countryside. Bisley is a quintessential Cotswold village, known for its pretty period cottages, traditional houses, two public houses and a historic church, creating a wonderfully classic rural setting.

Cirencester, approximately 10 miles away, is often referred to as "The Capital of the Cotswolds." This former Roman town became an important medieval wool centre and is now a thriving market town with excellent shopping. Alongside its main streets, characterful lanes such as Black Jack Street offer specialist independent shops. Cheltenham, the region's major centre, provides extensive retail, cultural and festival offerings, including the renowned Cheltenham Literature Festival and National Hunt racing at Cheltenham Racecourse.

Nearby Stroud offers a diverse mix of independent shops, cafés, and one of the country's best farmers' markets. Set within the dramatic landscape of the Five Valleys, the town has evolved from its industrial woollen-mill past to become a hub for artists, writers and creative industries, hosting numerous festivals throughout the year.

The area benefits from an excellent choice of schools, including leading independents such as Beaudesert Park, Cheltenham College, Cheltenham Ladies' College, Wycliffe, Westonbirt and Kingswood. Highly regarded state and grammar schools include Stroud High, Marling and Pate's Grammar School.

Transport links are strong, with regular Great Western Railway services from Kemble to London Paddington in around 75 minutes, and swift road access via the A417/419 to the M4 and M5. Sporting opportunities include golf in Cirencester and Minchinhampton, water sports at the Cotswold Water Park, hunting locally, and polo at Cirencester Park.













POINTS OF *Interest*



Towns and Cities

Sapperton 3.5 miles
Stroud 4.3 miles
Cirencester 10 miles
Frampton Mansell 6.3 miles
Tetbury 11 miles
Cheltenham 13.4 miles
Central London 103 miles

Pubs & Restaurants

The Bear Inn, Bisley
Stirrup Cup, Bisley
The Bell, Sapperton
The Crown Inn, Frampton Mansell
Jolly Nice Farm shop & Kitchen, Frampton Mansell

Train Stations

Kemble Station 11.3 miles
(London Paddington from 75 mins)
Cheltenham Spa 12 miles
(London Paddington from 1h 49 mins)

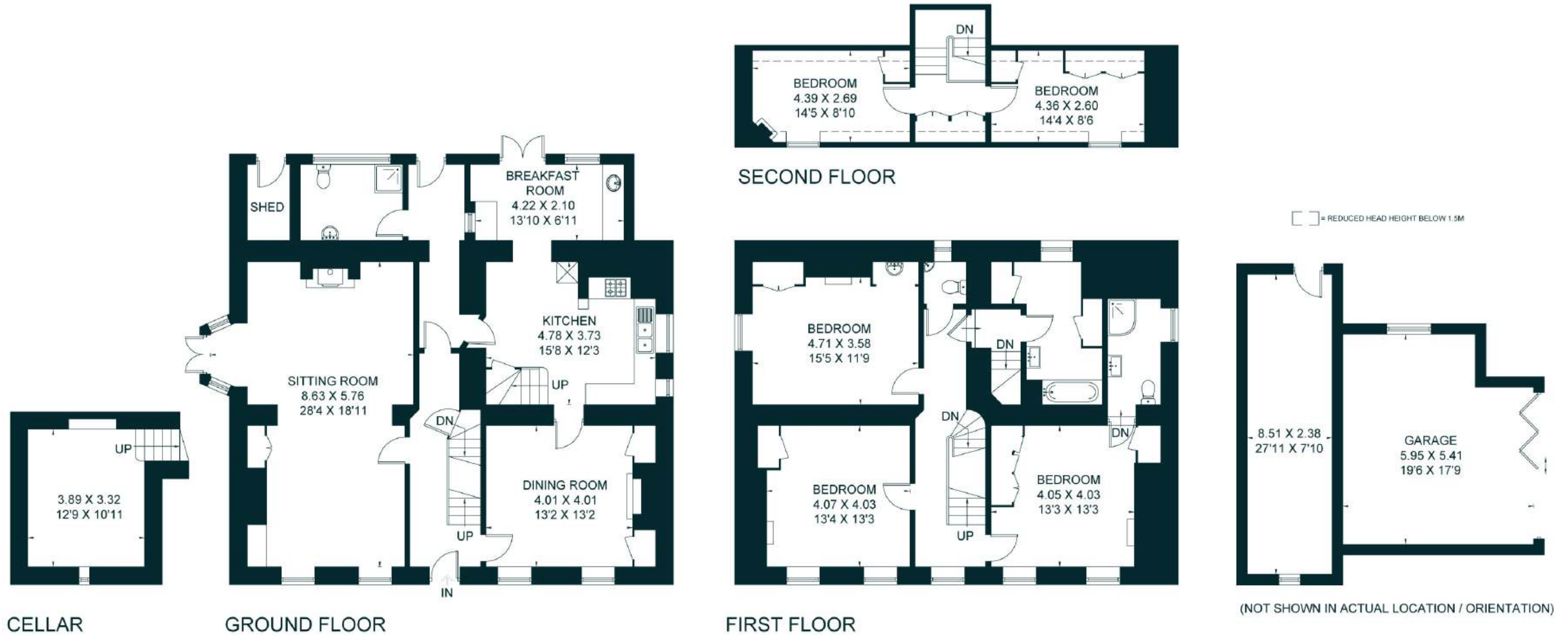
Airports

Bristol Airport 44.4 miles
Birmingham Airport 67 miles
London Heathrow 93 miles



FLOORPLANS

Nowell House



This floor plan has been drawn in accordance with RICS Property Measurement 2nd edition.

All measurements, including the floor area, are approximate and for illustrative purposes only. @fourwalls-group.com #104372

Total - 326.3 sq m / 3,512 sq ft
House - 259.7 sq m / 2,795 sq ft | Cellar-14.3 sq m / 154 sq ft | Outbuilding - 52.3 sq m / 563 sq ft

AREA GUIDE

The Cotswolds 🏡

Famous for its quintessential market towns and honey-coloured cottages, the rolling Cotswolds are bursting with character and charm. Here you'll find a whole host of award-winning hotels, pubs and world-class restaurants as well as some of the country's most unique property. Lose yourself amongst a constellation of picturesque

Walking - The Cotswold Way

The Cotswold Way takes you through honey-coloured villages, pass stately homes, ancient battle sites and beautiful churches, all whilst being treated to some of the most amazing views in England.

Eating Out - Lola & Co, Tetbury

Perfectly complementing aesthetics with drinks, the Chef uses the finest, seasonal, and sustainable products from the best artisans to create a menu that enables the discovery of flavours from a Majorcan beach, the Costa Brava, the Spain of Quixote and the white ancient mills.

Event - The Cheltenham Festival

A highlight in the National Hunt Season that provides an unrivalled atmosphere. Experience four days of the finest horses, jockeys and trainers battling it out for the highest honours in racing.

Westonbirt Arboretum

The most important national arboretum in the country which is home to over 2,500 different species of trees. Westonbirt is the perfect place for you to escape, relax or have an adventure and best known for its spectacular display of autumn colour.





THE
COUNTRY
HOUSE
DEPT.



03332 340 901
info@thecountryhousedepartment.com
thecountryhousedepartment.com

IMPORTANT NOTICE: The Country House Department gives notice that: 1. These particulars do not constitute an offer or contract or part thereof. 2. All descriptions, photographs and plans are for guidance only and should not be relied upon as statements or representations of fact. All measurements are approximate and not necessarily to scale. Any prospective purchaser must satisfy themselves of the correctness of the information within the particulars by inspection or otherwise. 3. The Country House Department does not have any authority to give any representations or warranties whatsoever in relation to this property (including but not limited to planning/building regulations), nor can it enter into any contract on behalf of the Vendor. 4. The Country House Department does not accept responsibility for any expenses incurred by prospective purchasers in inspecting properties which have been sold, let or withdrawn. 5. The property will be sold subject to and with the benefit of all wayleaves, covenants, easements and rights of way, whether mentioned in these particulars or not. Photographs taken March 2026. Particulars prepared in April 2026.