
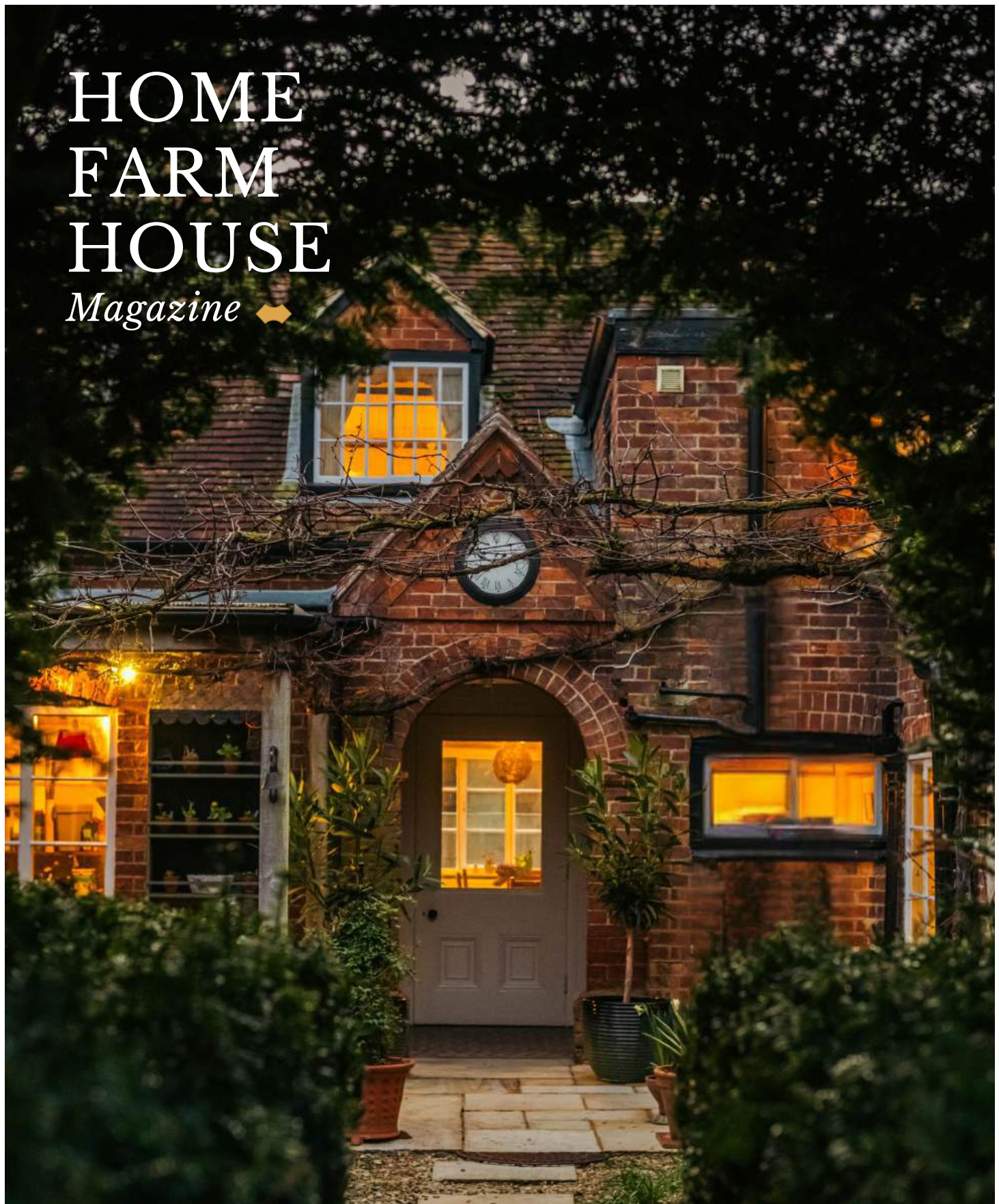


HOME FARM HOUSE

Magazine 



THE
COUNTRY
HOUSE
DEPT.





HOME FARM *House*

21/21a School Lane, Milton, Abingdon, Oxfordshire, OX14 4EH



Home Farm House is a Charming Grade II listed village residence located in the village of Milton in South Oxfordshire. Offering considerable charm and presence, the property extends to five bedrooms and displays a wealth of period features, including exposed timbers, original fireplaces and fine architectural detailing, all thoughtfully preserved to reflect its heritage.

The house is complemented by wonderful, well-established gardens, providing a delightful setting with areas of lawn, mature planting and a sense of privacy, ideal for both quiet enjoyment and entertaining. Attached to the main house is a particularly attractive two-bedroom cottage, offering versatile accommodation suited to guests, extended family or potential ancillary use.

Enjoying a peaceful position within this sought-after village, Home Farm House benefits from excellent communications, giving easy access to Oxford, Abingdon and the wider motorway network. Altogether, it is a distinguished country home combining period charm with practical living in an accessible and highly regarded location.







THE FINER *Details*

Bedrooms

5

Reception Rooms

4

Bath/Shower Rooms

2

2 Bedroom Cottage

Outbuildings

Green house, shed and workshops

Acreage

0.55

What3Words

///isolated.cake.imperious

Co-Ordinates

51°37'38"N , 001°17'50"W

Services

Mains water, electricity, and drainage
Gas fired central heating to the main house

Listing

Grade II

EPC

Main House D
Cottage E

Council Tax

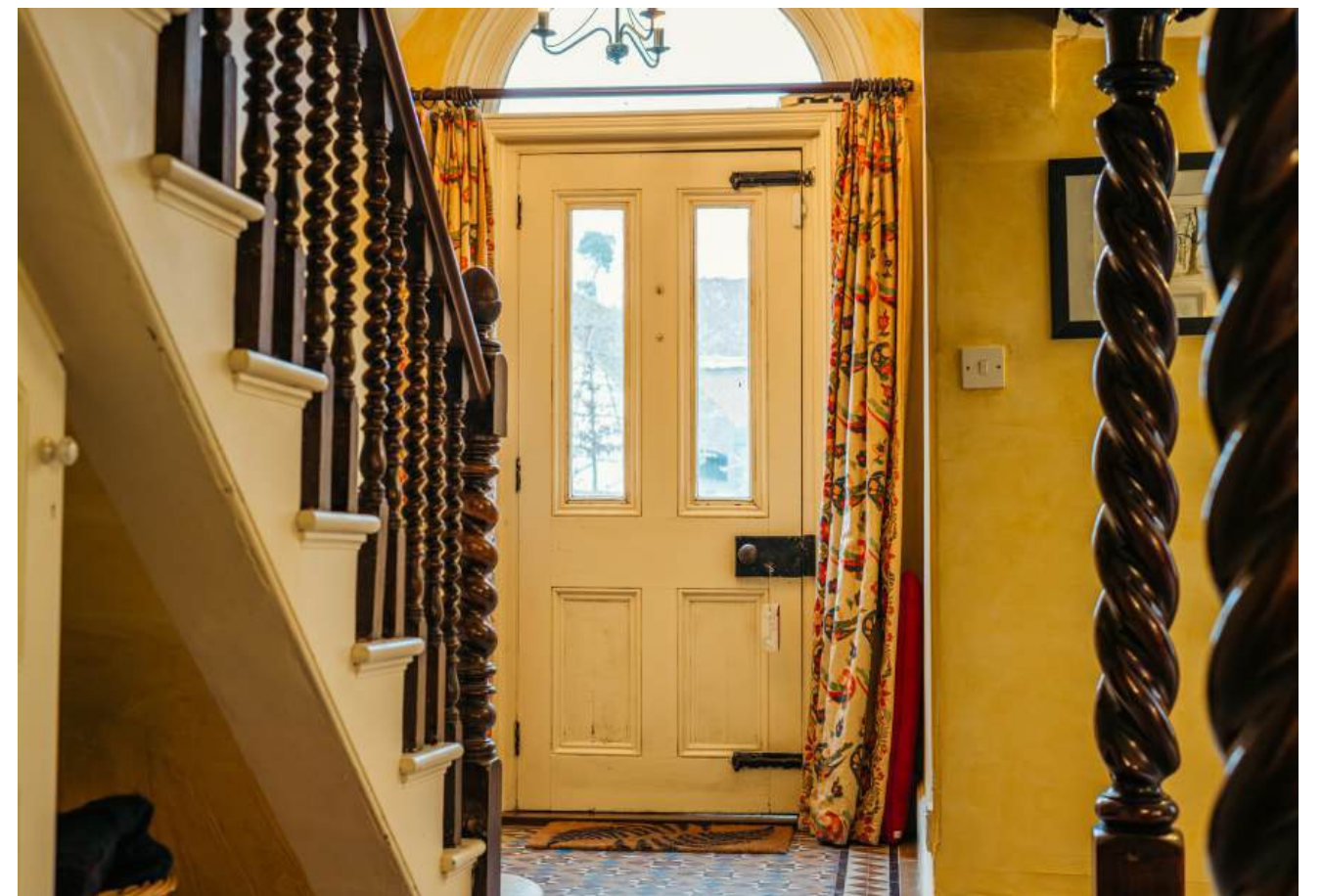
Main House - Band F
Cottage - Band D

Local Authority

Vale of White Horse











ABOUT THIS *Area*



Situated in South Oxfordshire, Milton is a well-connected village near Abingdon, offering a blend of rural charm and modern convenience. The village has a rich history and retains a strong community feel, with local amenities including a 14th-century church, post office, pharmacy, and the popular Plum Pudding public house. Residents also benefit from the nearby Milton Park, which provides coffee shops, a gym, and a wide range of employment opportunities within its science and technology hub.

Home Farm House is particularly well located for travel, with easy access to Abingdon, Oxford, and the A34. This major road links to the wider motorway network, including the M4 and M40, making the area ideal for commuters. Didcot lies approximately 3.5 miles away, with Didcot Parkway station offering fast rail services to London in as little as 42 minutes.

Milton is also well positioned for families, with a strong selection of both state and independent schools nearby. Primary schools can be found in Milton Heights and neighbouring villages such as Drayton and Sutton Courtenay, contributing to the area's appeal for those seeking a balanced village lifestyle with excellent connectivity and educational options.





Cottage

















POINTS OF *Interest*



Towns and Cities

Abingdon 4.4 miles

Oxford 11.8 miles

London 69.6 miles

Pubs & Restaurants

The Plum Pudding, Milton

The Swan, Sutton Courtenay

The Eyston Arms, East Hendred

Train Stations

Didcot Rail Station c3.7 miles

London Paddington from 38 mins)

Airports

London Heathrow 57 miles

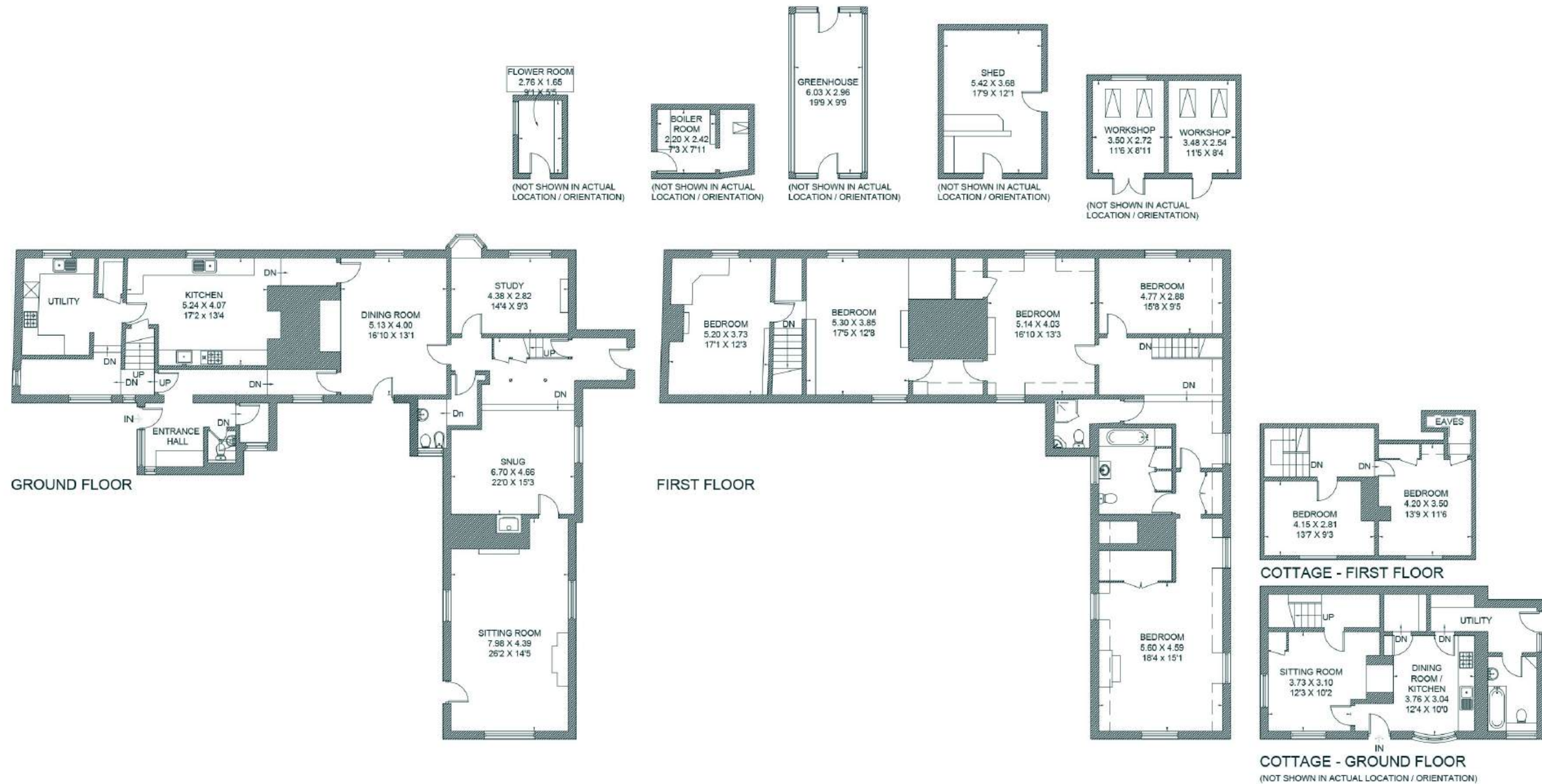
Bristol Airport 83.2 miles

London Gatwick 83.9 miles



FLOORPLANS

Home Farm House



Total - 484.5 sq m / 5,215 sq ft
 House - 349.6 sq m / 3,763 sq ft | Cottage - 134.9 sq m / 1,452 sq ft

AREA GUIDE

Oxfordshire 🍷

From the Riverside glamour of Henley in the South to Banbury's glorious golden sandstone in the North, Oxfordshire is a classic English county which defies simple definitions. With much of the county easily commutable to London, there are hundreds of picture-perfect country villages to choose from. You never have to look far for a good pub and the county also lays claim to some of the country's finest restaurants and retreats, including Raymond Blanc's two Michelin starred Le Manoir aux Quat'Saisons and the renowned Soho Farmhouse. Lovers of the outdoors are spoilt for choice with the walks along the Thames Path which winds its way through the heart of the county and also the The Ridgeway, an iconic national trail.

Walking - Wittenham Clumps

Wittenham Clumps is the common name for a pair of wooded chalk hills in the Thames Valley with an extensive network of paths.

Eating Out - Le Manoir aux Quat'Saisons

Described as "a twist of imaginative genius", Raymond Blanc's vision for Le Manoir aux Quat'Saisons has always been one of world-class gastronomic flair and outstanding organic produce.

Event - Henley Royal Regatta

A prestigious rowing event held annually on the River Thames. Races are head-to-head knock out competitions, raced over five days in July.

Day Out - Blenheim Palace

A monumental country palace in Woodstock. The palace, one of England's largest houses, was built between 1705 and 1722, and designated a UNESCO World Heritage Site in 1987.





THE
COUNTRY
HOUSE
DEPT.



03332 340 901
info@thecountryhousedepartment.com
thecountryhousedepartment.com

IMPORTANT NOTICE: The Country House Department gives notice that: 1. These particulars do not constitute an offer or contract or part thereof. 2. All descriptions, photographs and plans are for guidance only and should not be relied upon as statements or representations of fact. All measurements are approximate and not necessarily to scale. Any prospective purchaser must satisfy themselves of the correctness of the information within the particulars by inspection or otherwise. 3. The Country House Department does not have any authority to give any representations or warranties whatsoever in relation to this property (including but not limited to planning/building regulations), nor can it enter into any contract on behalf of the Vendor. 4. The Country House Department does not accept responsibility for any expenses incurred by prospective purchasers in inspecting properties which have been sold, let or withdrawn. 5. The property will be sold subject to and with the benefit of all wayleaves, covenants, easements and rights of way, whether mentioned in these particulars or not. Photographs taken March 2026 Particulars prepared in March 2026.